

Find out more

Learn more about Wildwatch Gympie by visiting Gympie Regional Council's website at www.gympie.qld.gov.au/wildwatch.

On the Wildwatch Gympie web page, you will be able to:

- access Wildwatch Gympie
- download information fact sheets
- find links to supporting information and resources, including the Timestamp Camera Basic app.

Wildwatch Gympie is a citizen science initiative by Gympie Regional Council.

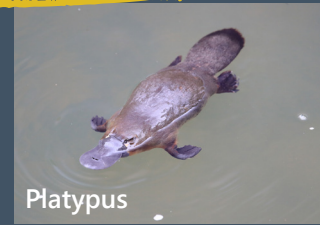


Please don't forget to also check and record any native animals that you find injured or dead on our roads. For injured animals, please call 1300 ANIMAL or contact ANARRA on 5484 9111 (24 hours).

Gympie region priority species



Koala



Platypus



Sugar Glider



Feathertail Glider



Brush-tailed Phascogale



Eastern Yellow Robin



Topknot Pigeon



Noisy Pitta



Wompoo Fruit Dove



Mary River Cod



Ornate Rainbowfish

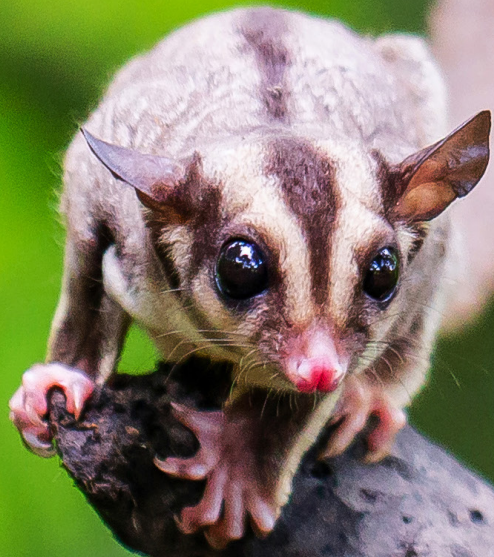


Great Barred Frog

Wildwatch Gympie

EVERY RECORD COUNTS





Getting started with Wildwatch Gympie

Wildwatch Gympie is an online service that gives everyone in our community the opportunity to share sightings of our region's most threatened and priority species. You can use Wildwatch Gympie on your smartphone or tablet, or on a desktop computer.

By working together capture data about the location and health of our local wildlife, we can better understand their habitat and threats, as well as better identify priority areas for conservation and rehabilitation efforts.

to

Using Wildwatch Gympie is EASY!

Step 1: Take a photo (if you can)

Step 2: Submit a record

You submit a record by answering some questions, uploading your photo, and marking the location on a map. It's easy to do and takes less than a minute!

Things to know

Here are a few things that are good to know when you are first starting out.

Gather the right tools

Wi-Fi/mobile data. To submit a record, you must have access to Wi-Fi or mobile data. If you do not have Wi-Fi or mobile data at that time, simply take a photo using your smart phone and record your sighting when you are back in Wi-Fi or mobile data range.

Geotagged photos. You can take a photo using the in-built camera on your smartphone, however we strongly recommend using a free app called TimeStamp Camera Basic. This camera app will automatically place a watermark on your photo with the GPS location, address, date and time. Photos are saved to your standard photo gallery on your phone and it will remember your location when you upload a record to the App. You can download this free app from the App Store or via Google Play. When using this app, please allow all permissions that are requested and ensure your location services are turned on.

Understand how your sightings are recorded and displayed

Sharing information. If you enter your full name and/or upload geotagged photos, your recorded sighting will be automatically shared with the State Government's wildlife sightings database Wildnet. If you do not include your name, or your photo is not geotagged, your record will not be shared with Wildnet.

Not all records will appear on the map. If you do not wish for your record to be displayed on the Wildwatch Gympie map, you can choose for it to remain confidential. In these cases, the data shared with Wildnet will also remain confidential.

Additional protection for some species. For various reasons, the locations of some fauna species must be kept confidential. These species will have an asterisk (*) next to their name. When you record a sighting of one of these species, the record will be captured in the system but will not display on the map.

Help us avoid duplicate records. When you upload a record, the location of the sighting will be marked on the map. You can select and re-open a record at any time to add additional comments. This feature helps to stop duplication of data. You can also add comments to other people's reports.

See your contribution in real time

The big picture. The dashboards give a summary of all the data captured about a particular species or group through a series of maps and graphs. Dashboards are best displayed on your desktop computer or tablet in landscape mode.

Your name will never display on the Wildwatch Gympie map.

By adding your name when recording a sighting, you are agreeing to your name being shared with Wildnet and other government agencies. The data you share, including your name, may be stored outside of Australia. If you do not agree to this, please leave the name field blank.

