



Gympie Regional Council Plans for Trunk Infrastructure

ARALUEN

Legend

- Trunk SWD Pits
- Trunk SWD Pipes
- Trunk Drainage Path
- Future Trunk SWD
- State Road Network

Service Catchment

- Cooloola Coast
- Gympie
- Southside East
- Southside West
- Western Towns
- Non Trunk Catchment

Disclaimer

While every care is taken to ensure the accuracy of this map, Gympie Regional Council makes no representations or warranties about its accuracy, reliability, completeness or suitability for any particular purpose and disclaims all responsibility and all liability (including without limitation, liability in negligence) for all expenses, losses, damage (including indirect or consequential damage) and costs which might incur as a result of the data being inaccurate or incomplete in any way and for any reason.

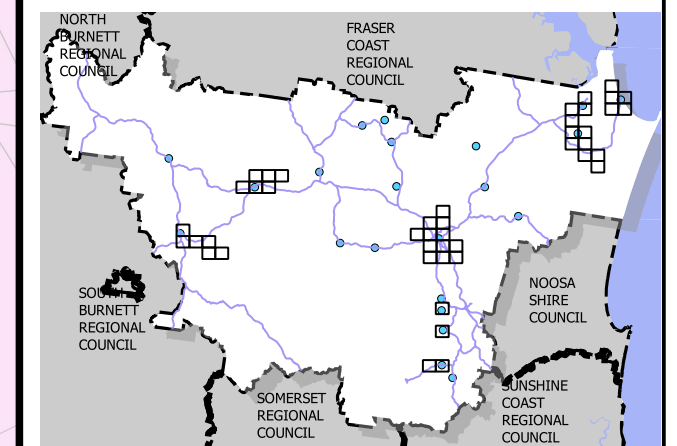
© Copyright Gympie Regional Council 2016

Cadastral Disclaimer:

Despite Department of Environment and Resource Management (DERM)'s best efforts, DERM makes no representations or warranties in relation to the information, and, to the extent permitted by law, exclude or limit all warranties relating to correctness, accuracy, reliability, completeness or currency and all liability for any direct, indirect and consequential costs, losses, damages and expenses incurred in any way (including but not limited to that arising from negligence) in connection with any use of or reliance on the information.

© The State of Queensland (Dept of Environment and Resource Management (DERM)) 2016.
Map Grid of Australia (MGA) Zone 56 Geodetic Datum of Australia (GDA) 1994

Scale 1:10000 1cm = 100m (on A3 print)



Trunk Stormwater

Map: PFTI-SWD-6

Version 3 Date: 15-03-2021



Gympie Regional Council Plans for Trunk Infrastructure

ARALUEN

Legend

- Trunk SWD Pits
- Trunk SWD Pipes
- Trunk Drainage Path
- Future Trunk SWD
- State Road Network

Service Catchment

- Cooloola Coast
- Gympie
- Southside East
- Southside West
- Western Towns
- Non Trunk Catchment

Disclaimer

While every care is taken to ensure the accuracy of this map, Gympie Regional Council makes no representations or warranties about its accuracy, reliability, completeness or suitability for any particular purpose and disclaims all responsibility and all liability (including without limitation, liability in negligence) for all expenses, losses, damage (including indirect or consequential damage) and costs which might incur as a result of the data being inaccurate or incomplete in any way and for any reason.

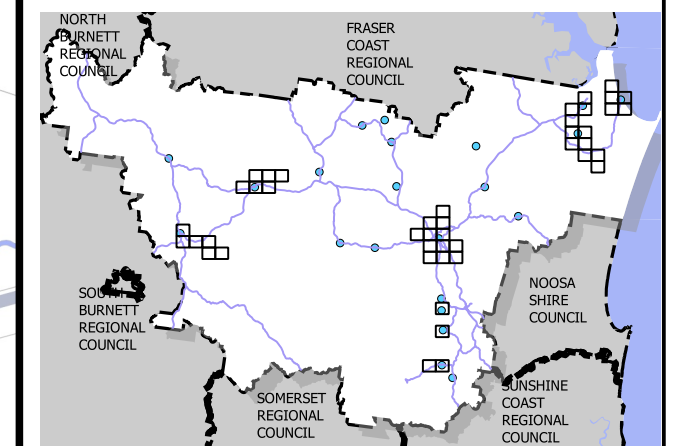
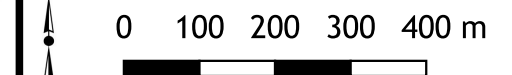
© Copyright Gympie Regional Council 2016

Cadastral Disclaimer:

Despite Department of Environment and Resource Management (DERM)'s best efforts, DERM makes no representations or warranties in relation to the information, and, to the extent permitted by law, exclude or limit all warranties relating to correctness, accuracy, reliability, completeness or currency and all liability for any direct, indirect and consequential costs, losses, damages and expenses incurred in any way (including but not limited to that arising from negligence) in connection with any use of or reliance on the information.

© The State of Queensland (Dept of Environment and Resource Management (DERM)) 2016.
Map Grid of Australia (MGA) Zone 56 Geodetic Datum of Australia (GDA) 1994

Scale 1:10000 1cm = 100m (on A3 print)



Trunk Stormwater

Map: PFTI-SWD-7

Version 3 Date: 15-03-2021



Gympie Regional Council Plans for Trunk Infrastructure

GYMPIE

Legend

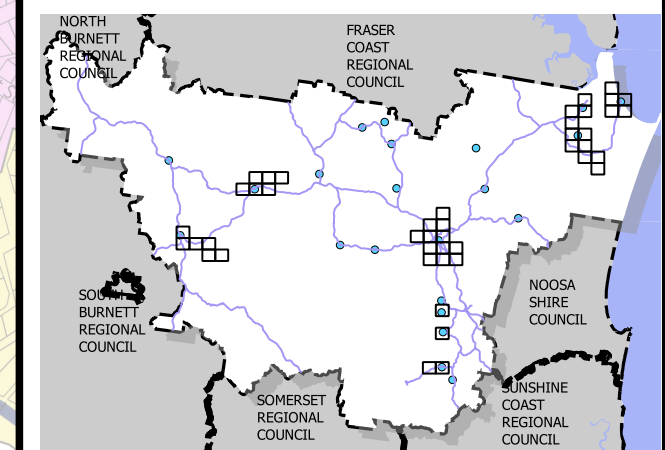
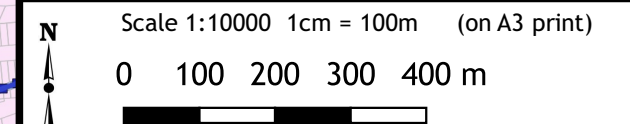
- Trunk SWD Pits
- Trunk SWD Pipes
- Trunk Drainage Path
- Future Trunk SWD
- State Road Network

Service Catchment

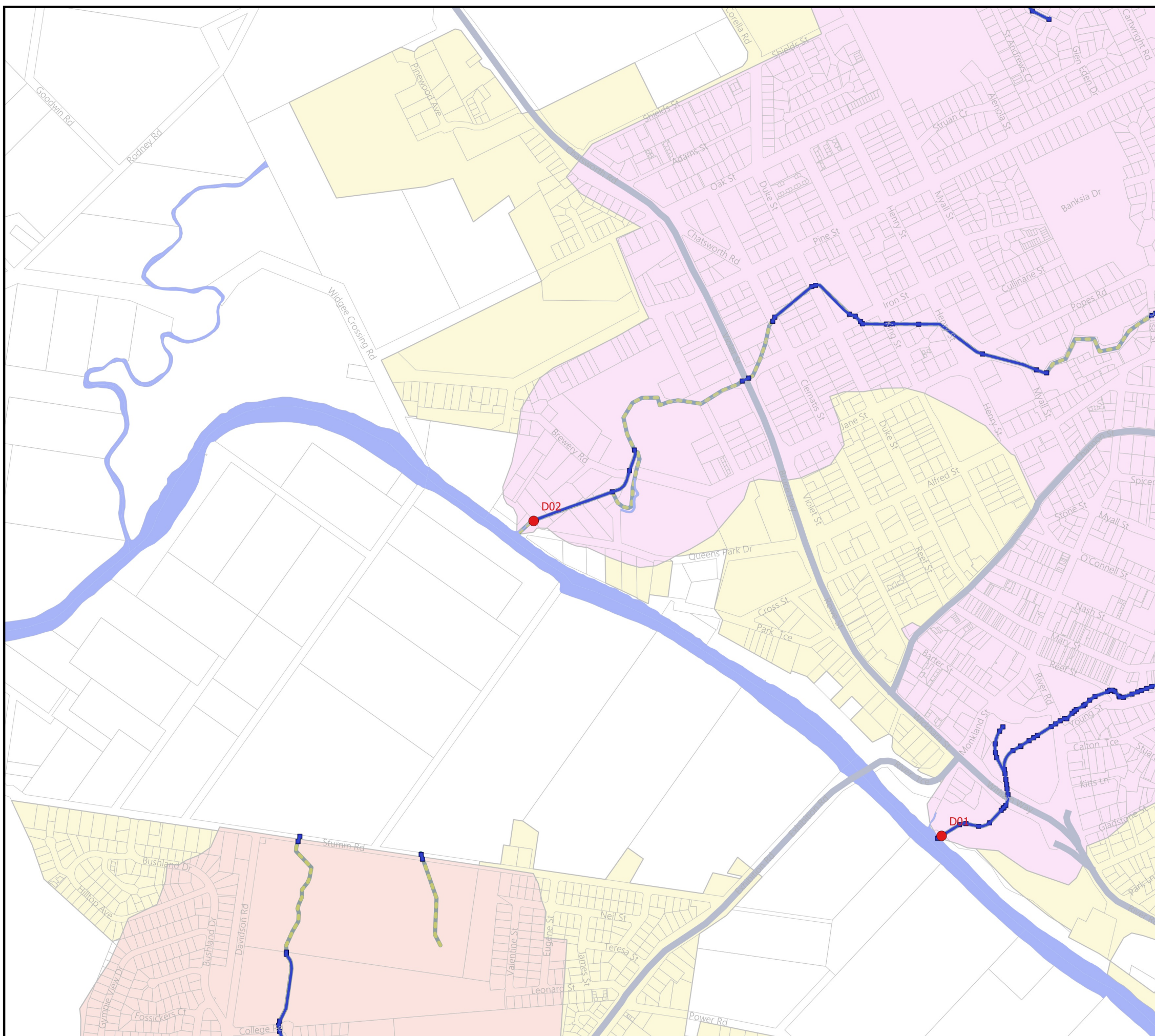
- Cooloola Coast
- Gympie
- Southside East
- Southside West
- Western Towns
- Non Trunk Catchment

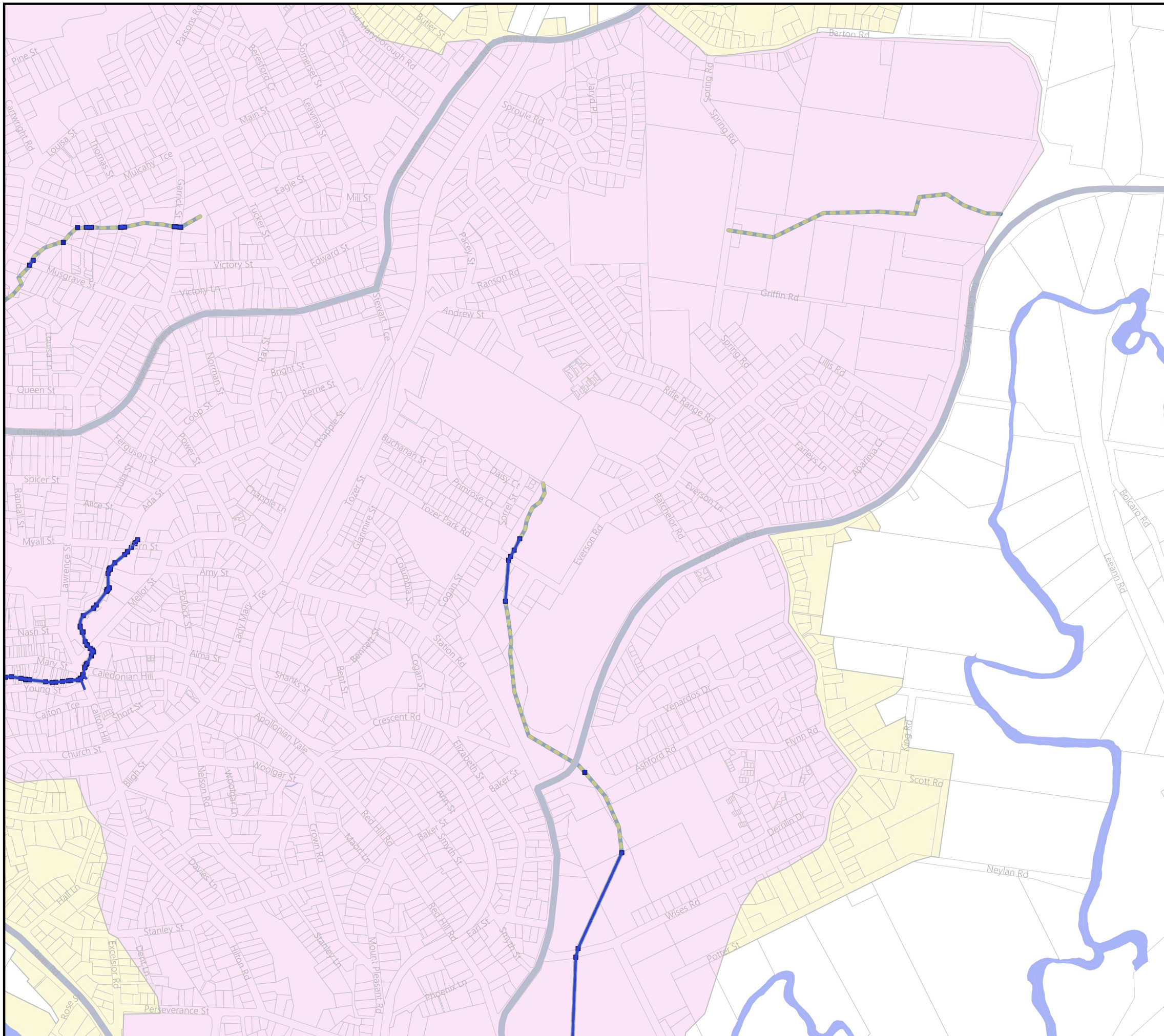
Disclaimer
While every care is taken to ensure the accuracy of this map, Gympie Regional Council makes no representations or warranties about its accuracy, reliability, completeness or suitability for any particular purpose and disclaims all responsibility and all liability (including without limitation, liability in negligence) for all expenses, losses, damage (including indirect or consequential damage) and costs which might incur as a result of the data being inaccurate or incomplete in any way and for any reason.
© Copyright Gympie Regional Council 2016

Cadastral Disclaimer:
Despite Department of Environment and Resource Management (DERM)'s best efforts, DERM makes no representations or warranties in relation to the information, and, to the extent permitted by law, exclude or limit all warranties relating to correctness, accuracy, reliability, completeness or currency and all liability for any direct, indirect and consequential costs, losses, damages and expenses incurred in any way (including but not limited to that arising from negligence) in connection with any use of or reliance on the information.
© The State of Queensland (Dept of Environment and Resource Management (DERM)) 2016.
Map Grid of Australia (MGA) Zone 56 Geodetic Datum of Australia (GDA) 1994



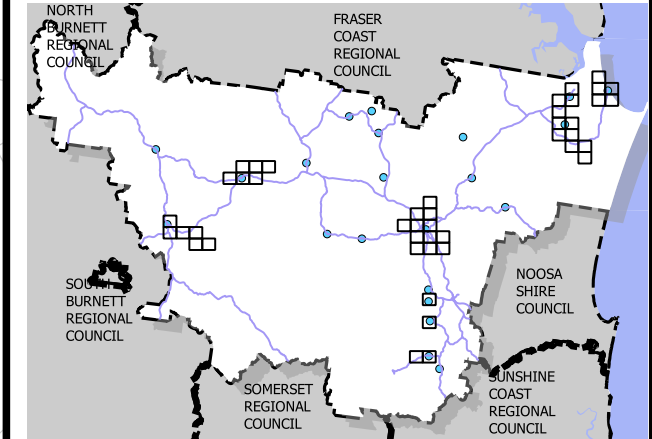
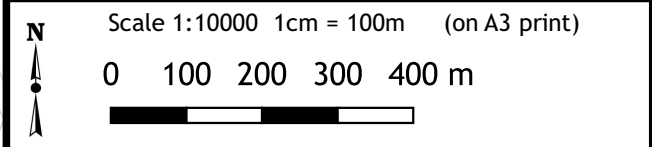
Trunk Stormwater
Map: PFTI-SWD-10
Version 3 Date: 15-03-2021

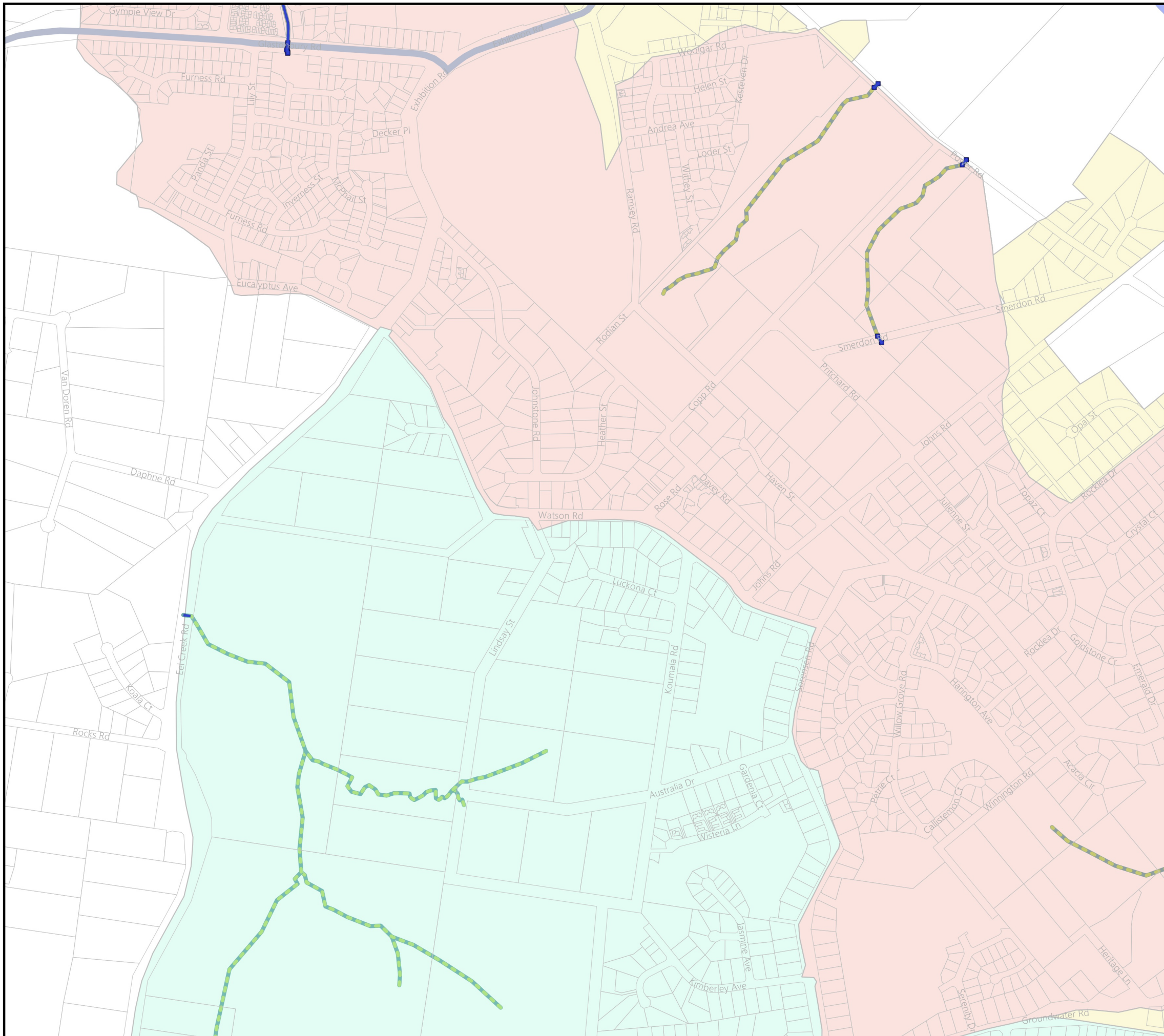




- Legend**
- Trunk SWD Pits
 - Trunk SWD Pipes
 - Trunk Drainage Path
- Trunk Stormwater Catchment**
- Future Trunk SWD
 - State Road Network
- Service Catchment**
- Cooloola Coast
 - Gympie
 - Southside East
 - Southside West
 - Western Towns
 - Non Trunk Catchment

Disclaimer
 While every care is taken to ensure the accuracy of this map, Gympie Regional Council makes no representations or warranties about its accuracy, reliability, completeness or suitability for any particular purpose and disclaims all responsibility and all liability (including without limitation, liability in negligence) for all expenses, losses, damage (including indirect or consequential damage) and costs which might incur as a result of the data being inaccurate or incomplete in any way and for any reason.
 © Copyright Gympie Regional Council 2016
Cadastral Disclaimer:
 Despite Department of Environment and Resource Management (DERM)'s best efforts, DERM makes no representations or warranties in relation to the information, and, to the extent permitted by law, exclude or limit all warranties relating to correctness, accuracy, reliability, completeness or currency and all liability for any direct, indirect and consequential costs, losses, damages and expenses incurred in any way (including but not limited to that arising from negligence) in connection with any use of or reliance on the information.
 © The State of Queensland (Dept of Environment and Resource Management (DERM)) 2016.
 Map Grid of Australia (MGA) Zone 56 Geodetic Datum of Australia (GDA) 1994





Gympie Regional Council
Plans for Trunk Infrastructure

SOUTHSIDE

Legend

- Trunk SWD Pits
- Trunk SWD Pipes
- Trunk Drainage Path

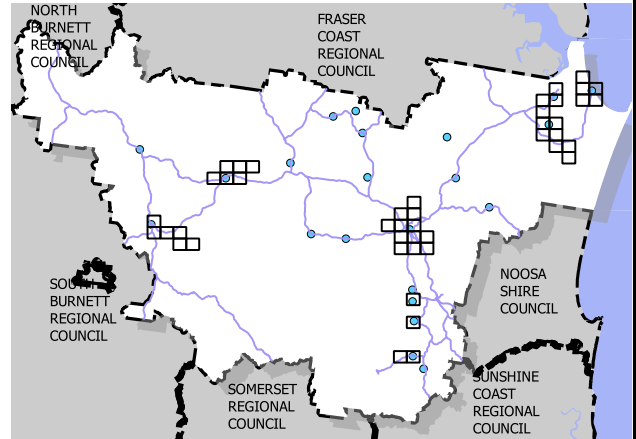
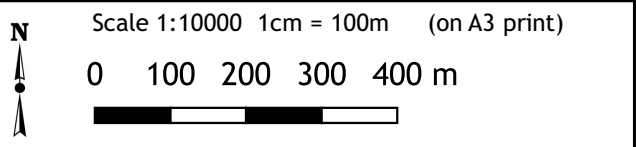
Trunk Stormwater Catchment

- Future Trunk SWD
- State Road Network

Service Catchment

- Cooloola Coast
- Gympie
- Southside East
- Southside West
- Western Towns
- Non Trunk Catchment

Disclaimer
While every care is taken to ensure the accuracy of this map, Gympie Regional Council makes no representations or warranties about its accuracy, reliability, completeness or suitability for any particular purpose and disclaims all responsibility and all liability (including without limitation, liability in negligence) for all expenses, losses, damage (including indirect or consequential damage) and costs which might incur as a result of the data being inaccurate or incomplete in any way and for any reason.
© Copyright Gympie Regional Council 2016
Cadastral Disclaimer:
Despite Department of Environment and Resource Management (DERM)'s best efforts, DERM makes no representations or warranties in relation to the information, and, to the extent permitted by law, exclude or limit all warranties relating to correctness, accuracy, reliability, completeness or currency and all liability for any direct, indirect and consequential costs, losses, damages and expenses incurred in any way (including but not limited to that arising from negligence) in connection with any use of or reliance on the information.
© The State of Queensland (Dept of Environment and Resource Management (DERM)) 2016.
Map Grid of Australia (MGA) Zone 56 Geodetic Datum of Australia (GDA) 1994



Trunk Stormwater
Map: PFTI-SWD-12
Version 3 Date: 15-03-2021



Gympie Regional Council Plans for Trunk Infrastructure

MONKLAND

Legend

- Trunk SWD Pits
- Trunk SWD Pipes
- Trunk Drainage Path

Trunk Stormwater Catchment

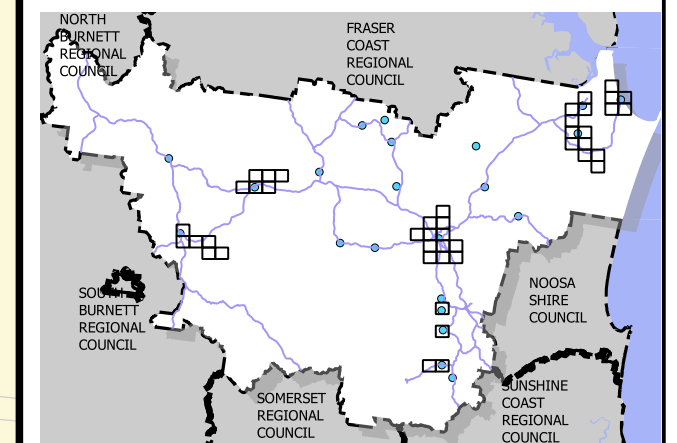
- Future Trunk SWD
- State Road Network

Service Catchment

- Cooloola Coast
- Gympie
- Southside East
- Southside West
- Western Towns
- Non Trunk Catchment

Disclaimer
While every care is taken to ensure the accuracy of this map, Gympie Regional Council makes no representations or warranties about its accuracy, reliability, completeness or suitability for any particular purpose and disclaims all responsibility and all liability (including without limitation, liability in negligence) for all expenses, losses, damage (including indirect or consequential damage) and costs which might incur as a result of the data being inaccurate or incomplete in any way and for any reason.
© Copyright Gympie Regional Council 2016
Cadastral Disclaimer:
Despite Department of Environment and Resource Management (DERM)'s best efforts, DERM makes no representations or warranties in relation to the information, and, to the extent permitted by law, exclude or limit all warranties relating to correctness, accuracy, reliability, completeness or currency and all liability for any direct, indirect and consequential costs, losses, damages and expenses incurred in any way (including but not limited to that arising from negligence) in connection with any use of or reliance on the information.
© The State of Queensland (Dept of Environment and Resource Management (DERM)) 2016.
Map Grid of Australia (MGA) Zone 56 Geodetic Datum of Australia (GDA) 1994

N Scale 1:10000 1cm = 100m (on A3 print)
0 100 200 300 400 m



Trunk Stormwater
Map: PFTI-SWD-13
Version 3 Date: 15-03-2021



Gympie Regional Council Plans for Trunk Infrastructure

EAST DEEP CREEK

Legend

- Trunk SWD Pits
- Trunk SWD Pipes
- Trunk Drainage Path
- Trunk Stormwater Catchment**
- Future Trunk SWD
- State Road Network

Service Catchment

- Cooloola Coast
- Gympie
- Southside East
- Southside West
- Western Towns
- Non Trunk Catchment

Disclaimer

While every care is taken to ensure the accuracy of this map, Gympie Regional Council makes no representations or warranties about its accuracy, reliability, completeness or suitability for any particular purpose and disclaims all responsibility and all liability (including without limitation, liability in negligence) for all expenses, losses, damage (including indirect or consequential damage) and costs which might incur as a result of the data being inaccurate or incomplete in any way and for any reason.

© Copyright Gympie Regional Council 2016

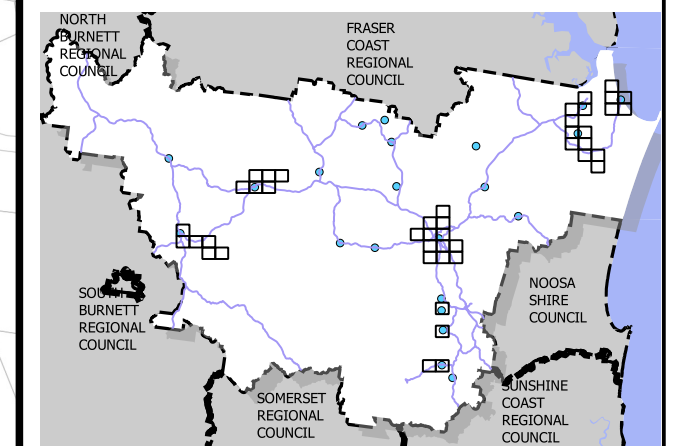
Cadastral Disclaimer:

Despite Department of Environment and Resource Management (DERM)'s best efforts, DERM makes no representations or warranties in relation to the information, and, to the extent permitted by law, exclude or limit all warranties relating to correctness, accuracy, reliability, completeness or currency and all liability for any direct, indirect and consequential costs, losses, damages and expenses incurred in any way (including but not limited to that arising from negligence) in connection with any use of or reliance on the information.

© The State of Queensland (Dept of Environment and Resource Management (DERM)) 2016.
Map Grid of Australia (MGA) Zone 56 Geodetic Datum of Australia (GDA) 1994

Scale 1:10000 1cm = 100m (on A3 print)

0 100 200 300 400 m



Trunk Stormwater

Map: PFTI-SWD-14

Version 3 Date: 15-03-2021



Gympie Regional Council Plans for Trunk Infrastructure

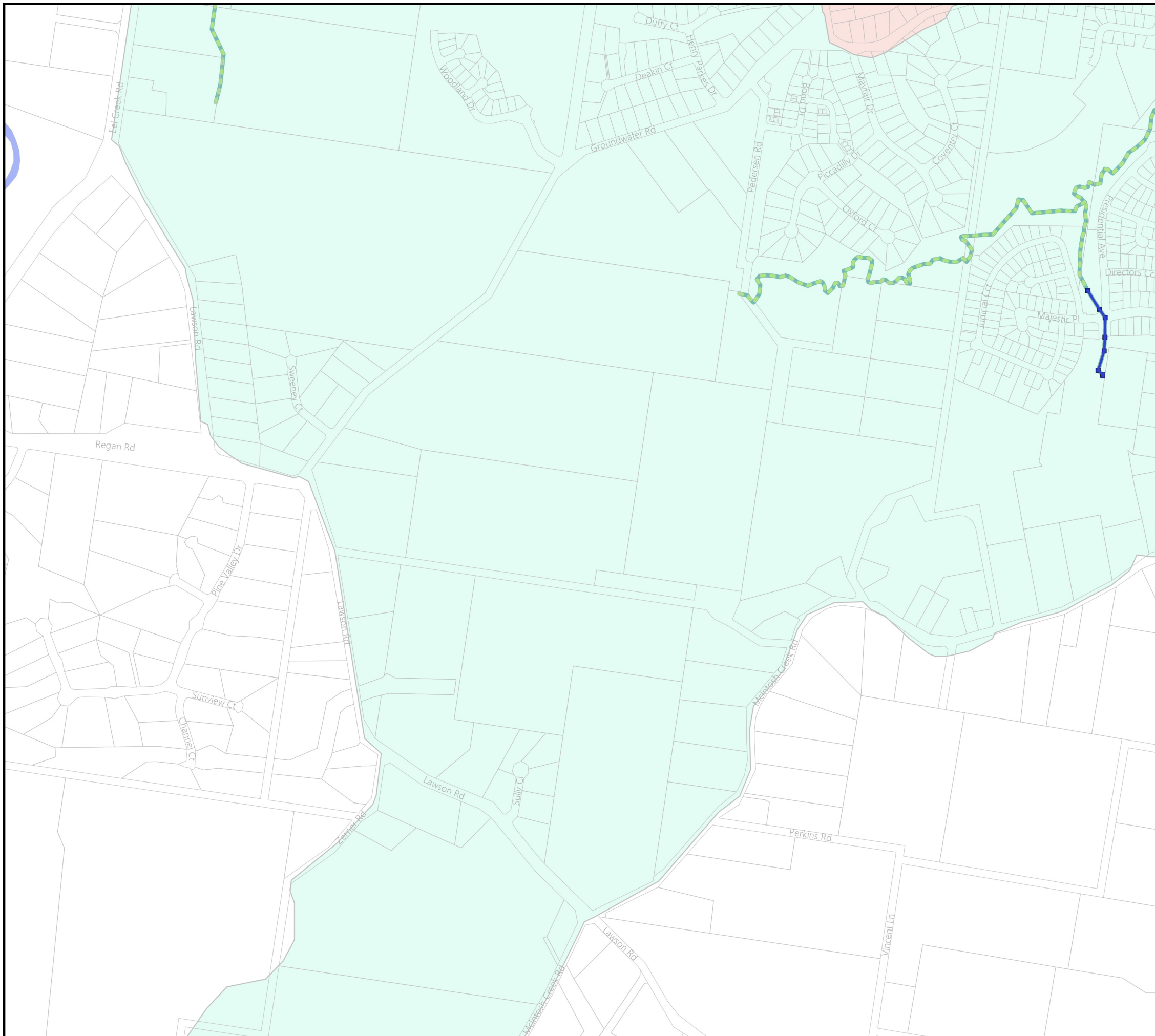
JONES HILL

Legend

- Trunk SWD Pits
- Trunk SWD Pipes
- Trunk Drainage Path
- Future Trunk SWD
- State Road Network

Service Catchment

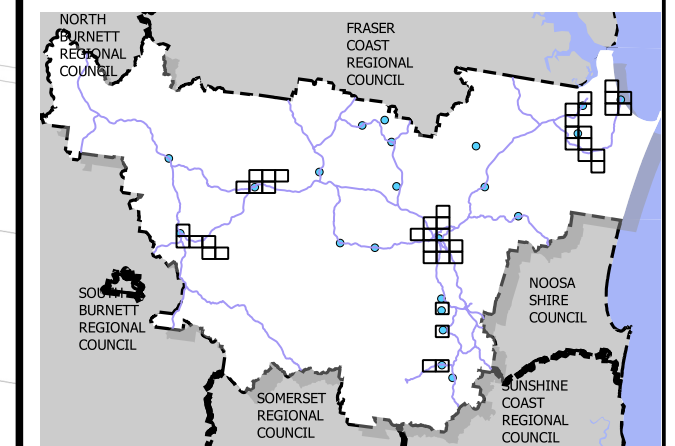
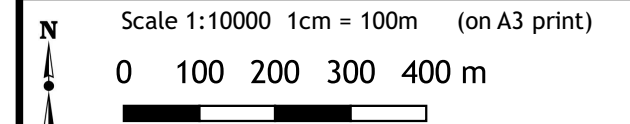
- Cooloola Coast
- Gympie
- Southside East
- Southside West
- Western Towns
- Non Trunk Catchment



Disclaimer
While every care is taken to ensure the accuracy of this map, Gympie Regional Council makes no representations or warranties about its accuracy, reliability, completeness or suitability for any particular purpose and disclaims all responsibility and all liability (including without limitation, liability in negligence) for all expenses, losses, damage (including indirect or consequential damage) and costs which might incur as a result of the data being inaccurate or incomplete in any way and for any reason.

Cadastral Disclaimer:
Despite Department of Environment and Resource Management (DERM)'s best efforts, DERM makes no representations or warranties in relation to the information, and, to the extent permitted by law, exclude or limit all warranties relating to correctness, accuracy, reliability, completeness or currency and all liability for any direct, indirect and consequential costs, losses, damages and expenses incurred in any way (including but not limited to that arising from negligence) in connection with any use of or reliance on the information.

© The State of Queensland (Dept of Environment and Resource Management (DERM)) 2016.
Map Grid of Australia (MGA) Zone 56 Geodetic Datum of Australia (GDA) 1994



Trunk Stormwater
Map: PFTI-SWD-16
Version 3 Date: 15-03-2021



Gympie Regional Council Plans for Trunk Infrastructure

JONES HILL

Legend

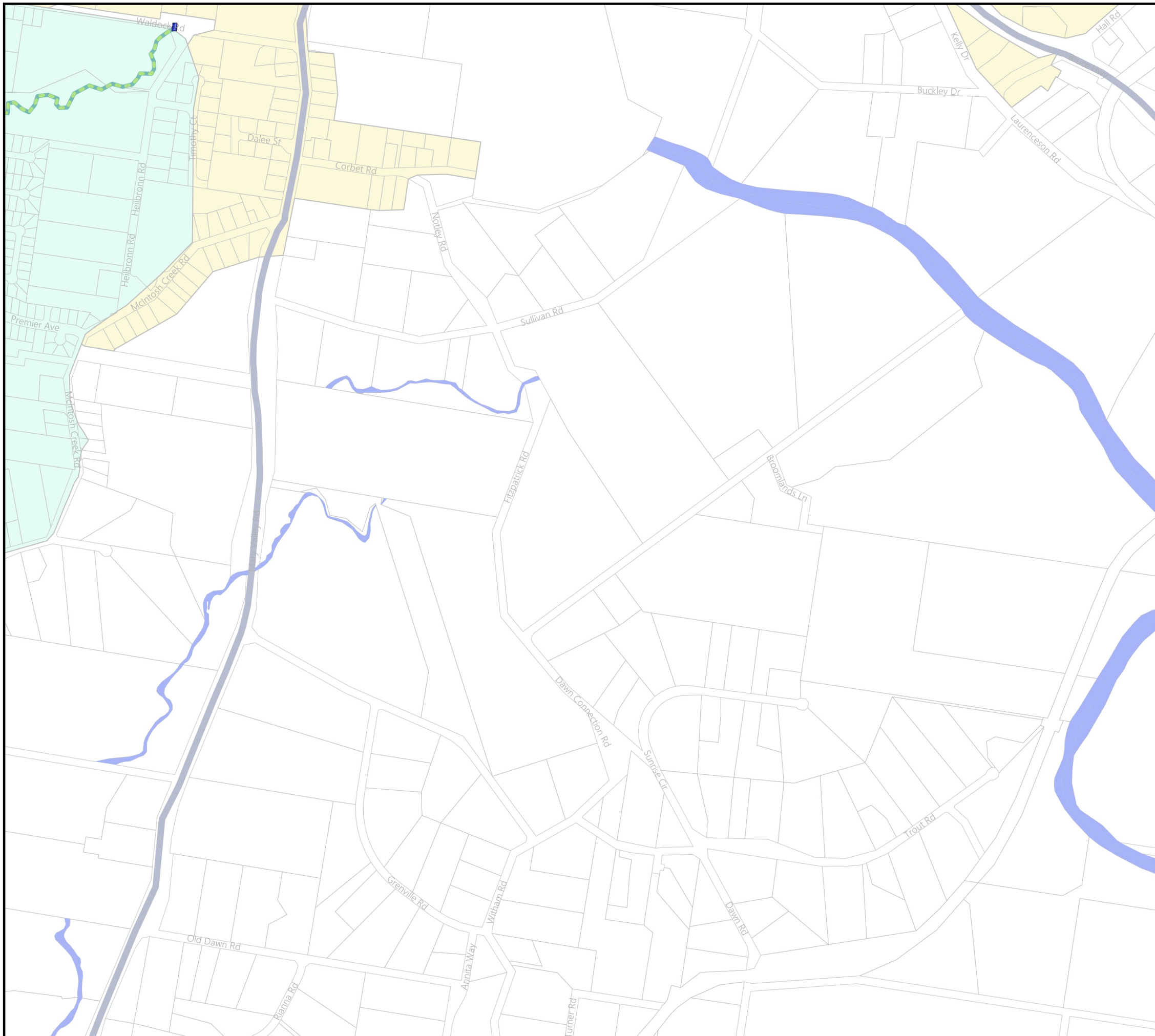
- Trunk SWD Pits
- Trunk SWD Pipes
- Trunk Drainage Path

Trunk Stormwater Catchment

- Future Trunk SWD
- State Road Network

Service Catchment

- Cooloola Coast
- Gympie
- Southside East
- Southside West
- Western Towns
- Non Trunk Catchment



Disclaimer
While every care is taken to ensure the accuracy of this map, Gympie Regional Council makes no representations or warranties about its accuracy, reliability, completeness or suitability for any particular purpose and disclaims all responsibility and all liability (including without limitation, liability in negligence) for all expenses, losses, damage (including indirect or consequential damage) and costs which might incur as a result of the data being inaccurate or incomplete in any way and for any reason.

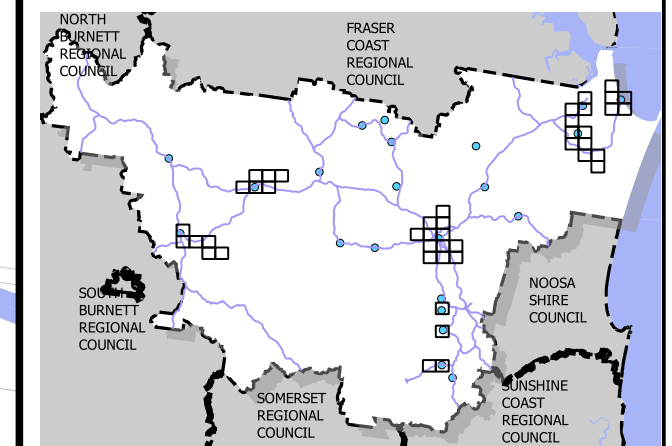
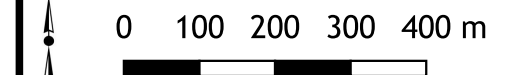
© Copyright Gympie Regional Council 2016

Cadastral Disclaimer:

Despite Department of Environment and Resource Management (DERM)'s best efforts, DERM makes no representations or warranties in relation to the information, and, to the extent permitted by law, exclude or limit all warranties relating to correctness, accuracy, reliability, completeness or currency and all liability for any direct, indirect and consequential costs, losses, damages and expenses incurred in any way (including but not limited to that arising from negligence) in connection with any use of or reliance on the information.

© The State of Queensland (Dept of Environment and Resource Management (DERM)) 2016.
Map Grid of Australia (MGA) Zone 56 Geodetic Datum of Australia (GDA) 1994

Scale 1:10000 1cm = 100m (on A3 print)



Trunk Stormwater

Map: PFTI-SWD-17

Version 3 Date: 15-03-2021



Gympie Regional Council Plans for Trunk Infrastructure

WOONDUM

Legend

- Trunk SWD Pits
 - Trunk SWD Pipes
 - Trunk Drainage Path
- Trunk Stormwater Catchment
- Future Trunk SWD
 - State Road Network

Service Catchment

- Cooloola Coast
- Gympie
- Southside East
- Southside West
- Western Towns
- Non Trunk Catchment



Disclaimer
While every care is taken to ensure the accuracy of this map, Gympie Regional Council makes no representations or warranties about its accuracy, reliability, completeness or suitability for any particular purpose and disclaims all responsibility and all liability (including without limitation, liability in negligence) for all expenses, losses, damage (including indirect or consequential damage) and costs which might incur as a result of the data being inaccurate or incomplete in any way and for any reason.

© Copyright Gympie Regional Council 2016

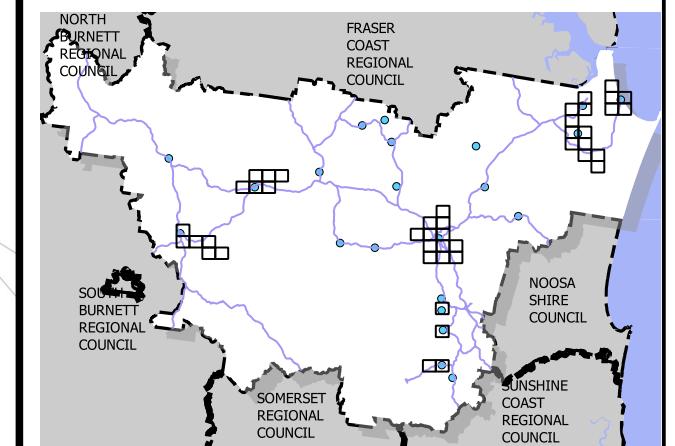
Cadastral Disclaimer:

Despite Department of Environment and Resource Management (DERM)'s best efforts, DERM makes no representations or warranties in relation to the information, and, to the extent permitted by law, exclude or limit all warranties relating to correctness, accuracy, reliability, completeness or currency and all liability for any direct, indirect and consequential costs, losses, damages and expenses incurred in any way (including but not limited to that arising from negligence) in connection with any use of or reliance on the information.

© The State of Queensland (Dept of Environment and Resource Management (DERM)) 2016.
Map Grid of Australia (MGA) Zone 56 Geodetic Datum of Australia (GDA) 1994

N Scale 1:10000 1cm = 100m (on A3 print)

0 100 200 300 400 m



Trunk Stormwater

Map: PFTI-SWD-18

Version 3 Date: 15-03-2021



Gympie Regional Council Plans for Trunk Infrastructure

MCINTOSH CREEK

Legend

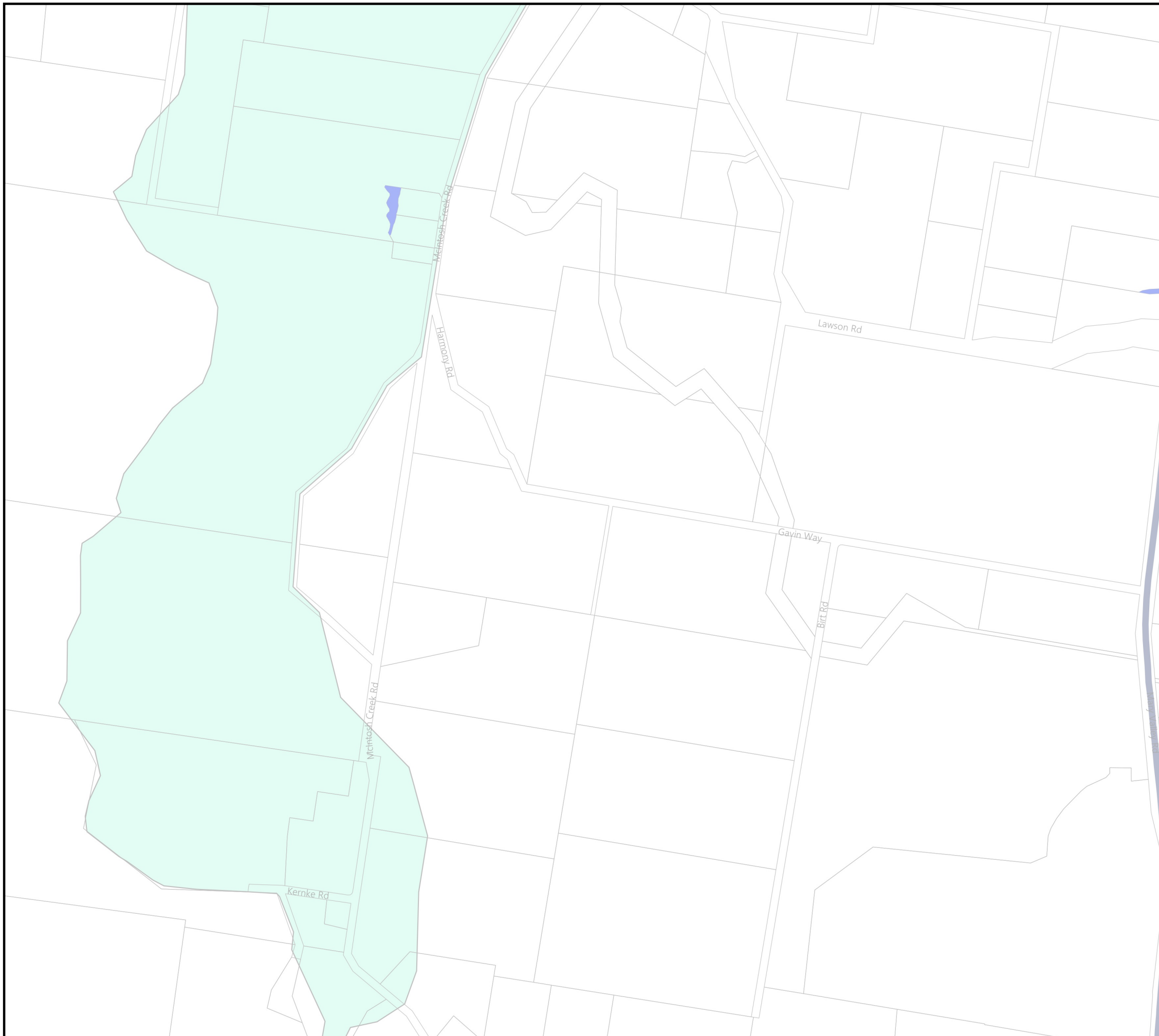
- Trunk SWD Pits
- Trunk SWD Pipes
- Trunk Drainage Path

Trunk Stormwater Catchment

- Future Trunk SWD
- State Road Network

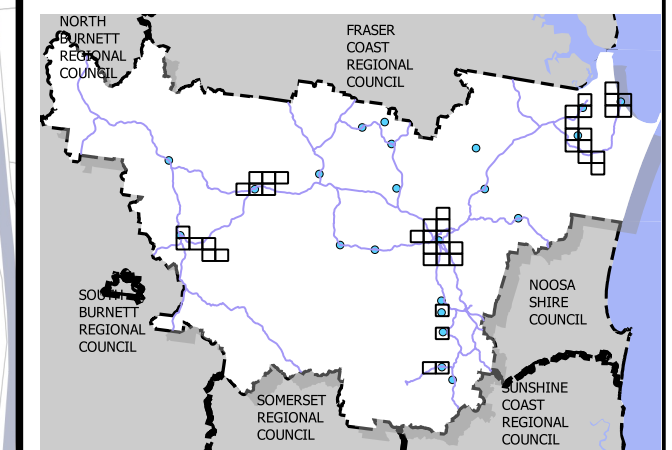
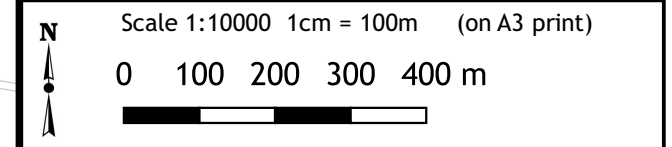
Service Catchment

- Cooloola Coast
- Gympie
- Southside East
- Southside West
- Western Towns
- Non Trunk Catchment



Disclaimer
While every care is taken to ensure the accuracy of this map, Gympie Regional Council makes no representations or warranties about its accuracy, reliability, completeness or suitability for any particular purpose and disclaims all responsibility and all liability (including without limitation, liability in negligence) for all expenses, losses, damage (including indirect or consequential damage) and costs which might incur as a result of the data being inaccurate or incomplete in any way and for any reason.
© Copyright Gympie Regional Council 2016

Cadastral Disclaimer:
Despite Department of Environment and Resource Management (DERM)'s best efforts, DERM makes no representations or warranties in relation to the information, and, to the extent permitted by law, exclude or limit all warranties relating to correctness, accuracy, reliability, completeness or currency and all liability for any direct, indirect and consequential costs, losses, damages and expenses incurred in any way (including but not limited to that arising from negligence) in connection with any use of or reliance on the information.
© The State of Queensland (Dept of Environment and Resource Management (DERM)) 2016.
Map Grid of Australia (MGA) Zone 56 Geodetic Datum of Australia (GDA) 1994



Trunk Stormwater
Map: PFTI-SWD-20
Version 3 Date: 15-03-2021



Gympie Regional Council Plans for Trunk Infrastructure

INSKIP

Legend

- Trunk SWD Pits
- Trunk SWD Pipes
- Trunk Drainage Path
- Trunk Stormwater Catchment**
- Future Trunk SWD
- State Road Network

Service Catchment

- Cooloola Coast
- Gympie
- Southside East
- Southside West
- Western Towns
- Non Trunk Catchment

Disclaimer

While every care is taken to ensure the accuracy of this map, Gympie Regional Council makes no representations or warranties about its accuracy, reliability, completeness or suitability for any particular purpose and disclaims all responsibility and all liability (including without limitation, liability in negligence) for all expenses, losses, damage (including indirect or consequential damage) and costs which might incur as a result of the data being inaccurate or incomplete in any way and for any reason.

© Copyright Gympie Regional Council 2016

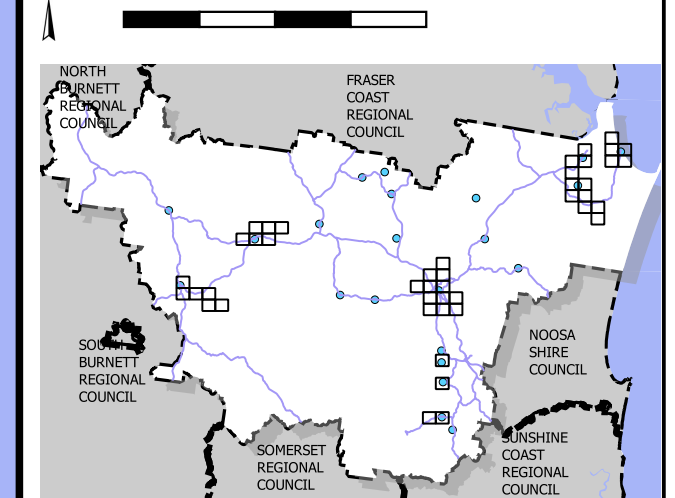
Cadastral Disclaimer:

Despite Department of Environment and Resource Management (DERM)'s best efforts, DERM makes no representations or warranties in relation to the information, and, to the extent permitted by law, exclude or limit all warranties relating to correctness, accuracy, reliability, completeness or currency and all liability for any direct, indirect and consequential costs, losses, damages and expenses incurred in any way (including but not limited to that arising from negligence) in connection with any use of or reliance on the information.

© The State of Queensland (Dept of Environment and Resource Management (DERM)) 2016.
Map Grid of Australia (MGA) Zone 56 Geodetic Datum of Australia (GDA) 1994

Scale 1:10000 1cm = 100m (on A3 print)

0 100 200 300 400 m



Trunk Stormwater

Map: PFTI-SWD-21

Version 3 Date: 15-03-2021



Gympie Regional Council Plans for Trunk Infrastructure

RAINBOW BEACH

Legend

- Trunk SWD Pits
- Trunk SWD Pipes
- Trunk Drainage Path
- Future Trunk SWD
- State Road Network

Service Catchment

- Cooloola Coast
- Gympie
- Southside East
- Southside West
- Western Towns
- Non Trunk Catchment

Disclaimer

While every care is taken to ensure the accuracy of this map, Gympie Regional Council makes no representations or warranties about its accuracy, reliability, completeness or suitability for any particular purpose and disclaims all responsibility and all liability (including without limitation, liability in negligence) for all expenses, losses, damage (including indirect or consequential damage) and costs which might incur as a result of the data being inaccurate or incomplete in any way and for any reason.

© Copyright Gympie Regional Council 2016

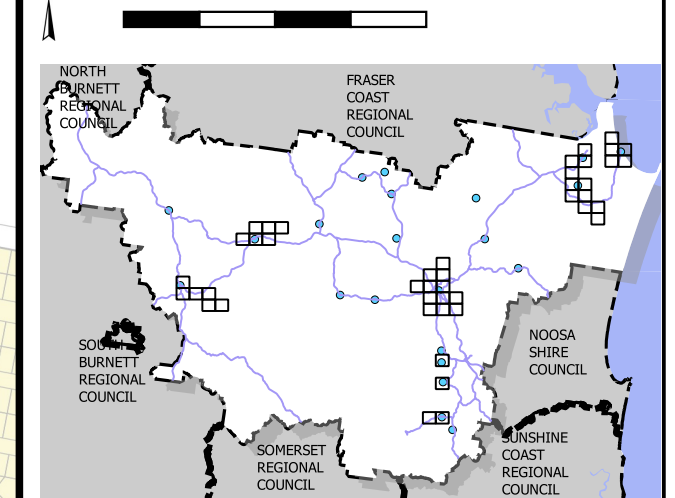
Cadastral Disclaimer:

Despite Department of Environment and Resource Management (DERM)'s best efforts, DERM makes no representations or warranties in relation to the information, and, to the extent permitted by law, exclude or limit all warranties relating to correctness, accuracy, reliability, completeness or currency and all liability for any direct, indirect and consequential costs, losses, damages and expenses incurred in any way (including but not limited to that arising from negligence) in connection with any use of or reliance on the information.

© The State of Queensland (Dept of Environment and Resource Management (DERM)) 2016.
Map Grid of Australia (MGA) Zone 56 Geodetic Datum of Australia (GDA) 1994

Scale 1:10000 1cm = 100m (on A3 print)

0 100 200 300 400 m



Trunk Stormwater

Map: PFTI-SWD-22

Version 3 Date: 15-03-2021



Gympie Regional Council Plans for Trunk Infrastructure

RAINBOW BEACH

Legend

- Trunk SWD Pits
 - Trunk SWD Pipes
 - Trunk Drainage Path
- Trunk Stormwater Catchment
- Future Trunk SWD
 - State Road Network

Service Catchment

- Cooloola Coast
- Gympie
- Southside East
- Southside West
- Western Towns
- Non Trunk Catchment

Disclaimer

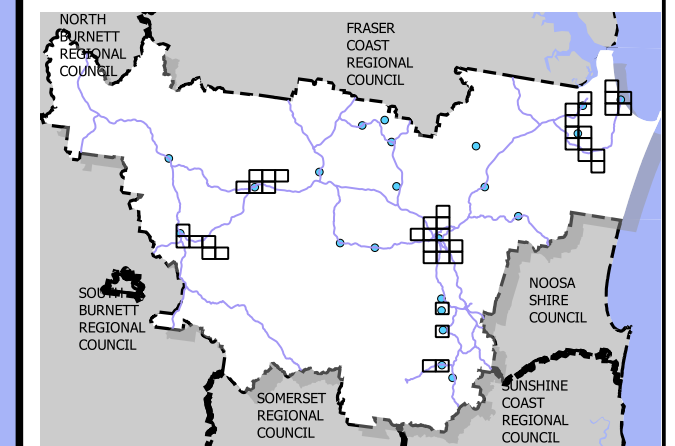
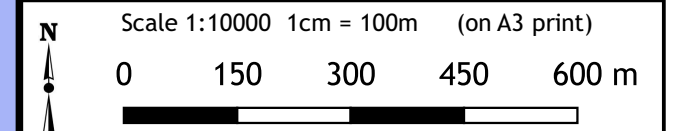
While every care is taken to ensure the accuracy of this map, Gympie Regional Council makes no representations or warranties about its accuracy, reliability, completeness or suitability for any particular purpose and disclaims all responsibility and all liability (including without limitation, liability in negligence) for all expenses, losses, damage (including indirect or consequential damage) and costs which might incur as a result of the data being inaccurate or incomplete in any way and for any reason.

© Copyright Gympie Regional Council 2016

Cadastral Disclaimer:

Despite Department of Environment and Resource Management (DERM)'s best efforts, DERM makes no representations or warranties in relation to the information, and, to the extent permitted by law, exclude or limit all warranties relating to correctness, accuracy, reliability, completeness or currency and all liability for any direct, indirect and consequential costs, losses, damages and expenses incurred in any way (including but not limited to that arising from negligence) in connection with any use of or reliance on the information.

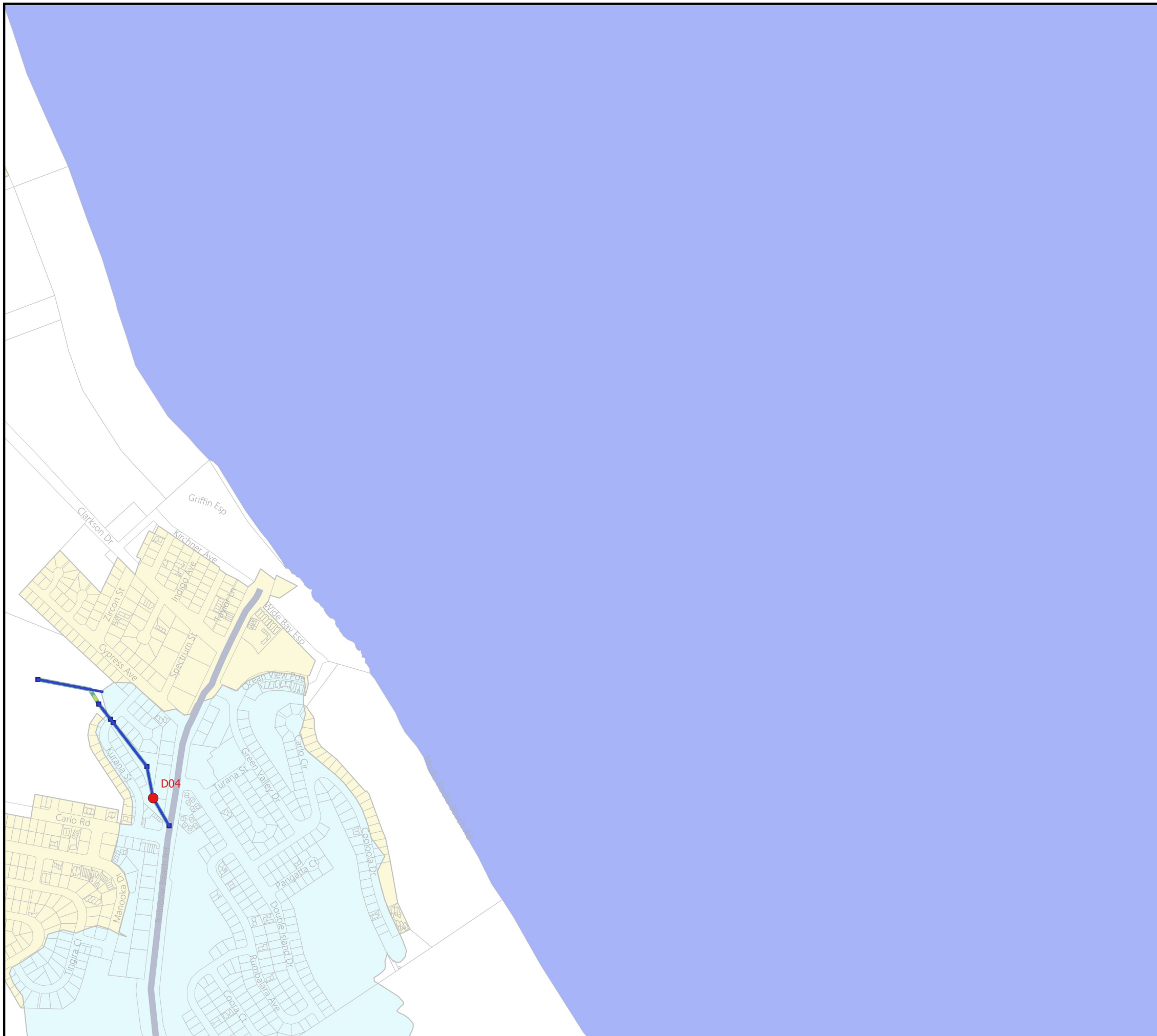
© The State of Queensland (Dept of Environment and Resource Management (DERM)) 2016.
Map Grid of Australia (MGA) Zone 56 Geodetic Datum of Australia (GDA) 1994



Trunk Stormwater

Map: PFTI-SWD-23

Version 3 Date: 15-03-2021





Gympie Regional Council Plans for Trunk Infrastructure

COOLOOLA

Legend

- Trunk SWD Pits
- Trunk SWD Pipes
- Trunk Drainage Path

Trunk Stormwater Catchment

- Future Trunk SWD
- State Road Network

Service Catchment

- Cooloola Coast
- Gympie
- Southside East
- Southside West
- Western Towns
- Non Trunk Catchment

Disclaimer

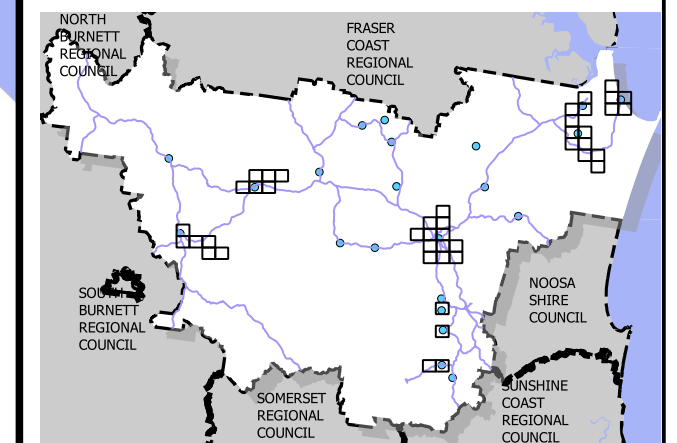
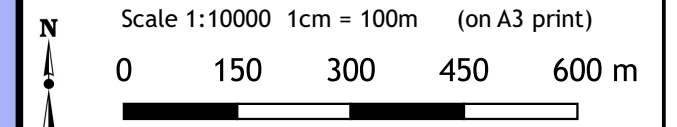
While every care is taken to ensure the accuracy of this map, Gympie Regional Council makes no representations or warranties about its accuracy, reliability, completeness or suitability for any particular purpose and disclaims all responsibility and all liability (including without limitation, liability in negligence) for all expenses, losses, damage (including indirect or consequential damage) and costs which might incur as a result of the data being inaccurate or incomplete in any way and for any reason.

© Copyright Gympie Regional Council 2016

Cadastral Disclaimer:

Despite Department of Environment and Resource Management (DERM)'s best efforts, DERM makes no representations or warranties in relation to the information, and, to the extent permitted by law, exclude or limit all warranties relating to correctness, accuracy, reliability, completeness or currency and all liability for any direct, indirect and consequential costs, losses, damages and expenses incurred in any way (including but not limited to that arising from negligence) in connection with any use of or reliance on the information.

© The State of Queensland (Dept of Environment and Resource Management (DERM)) 2016.
Map Grid of Australia (MGA) Zone 56 Geodetic Datum of Australia (GDA) 1994



Trunk Stormwater

Map: PFTI-SWD-25

Version 3 Date: 15-03-2021



Gympie Regional Council Plans for Trunk Infrastructure

COOLOOLA

Legend

- Trunk SWD Pits
- Trunk SWD Pipes
- Trunk Drainage Path

Trunk Stormwater Catchment

- Future Trunk SWD
- State Road Network

Service Catchment

- Cooloola Coast
- Gympie
- Southside East
- Southside West
- Western Towns
- Non Trunk Catchment

Disclaimer

While every care is taken to ensure the accuracy of this map, Gympie Regional Council makes no representations or warranties about its accuracy, reliability, completeness or suitability for any particular purpose and disclaims all responsibility and all liability (including without limitation, liability in negligence) for all expenses, losses, damage (including indirect or consequential damage) and costs which might incur as a result of the data being inaccurate or incomplete in any way and for any reason.

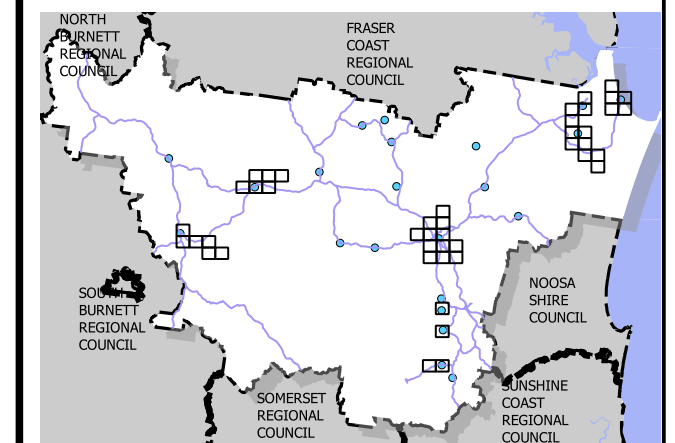
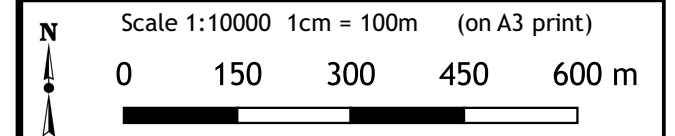
© Copyright Gympie Regional Council 2016

Cadastral Disclaimer:

Despite Department of Environment and Resource Management (DERM)'s best efforts, DERM makes no representations or warranties in relation to the information, and, to the extent permitted by law, exclude or limit all warranties relating to correctness, accuracy, reliability, completeness or currency and all liability for any direct, indirect and consequential costs, losses, damages and expenses incurred in any way (including but not limited to that arising from negligence) in connection with any use of or reliance on the information.

© The State of Queensland (Dept of Environment and Resource Management (DERM)) 2016.

Map Grid of Australia (MGA) Zone 56 Geodetic Datum of Australia (GDA) 1994



Trunk Stormwater

Map: PFTI-SWD-26

Version 3 Date: 15-03-2021

Freshwater Track



Gympie Regional Council Plans for Trunk Infrastructure

TIN CAN BAY

Legend

- Trunk SWD Pits
 - Trunk SWD Pipes
 - Trunk Drainage Path
- Trunk Stormwater Catchment
- Future Trunk SWD
 - State Road Network

Service Catchment

- Cooloola Coast
- Gympie
- Southside East
- Southside West
- Western Towns
- Non Trunk Catchment

Disclaimer

While every care is taken to ensure the accuracy of this map, Gympie Regional Council makes no representations or warranties about its accuracy, reliability, completeness or suitability for any particular purpose and disclaims all responsibility and all liability (including without limitation, liability in negligence) for all expenses, losses, damage (including indirect or consequential damage) and costs which might incur as a result of the data being inaccurate or incomplete in any way and for any reason.

© Copyright Gympie Regional Council 2016

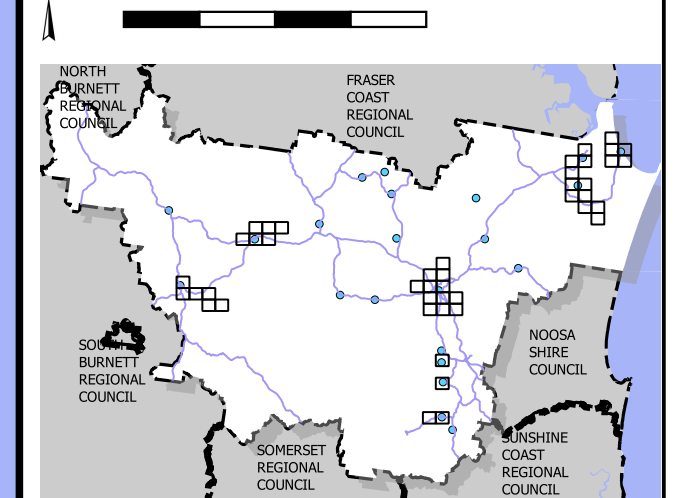
Cadastral Disclaimer:

Despite Department of Environment and Resource Management (DERM)'s best efforts, DERM makes no representations or warranties in relation to the information, and, to the extent permitted by law, exclude or limit all warranties relating to correctness, accuracy, reliability, completeness or currency and all liability for any direct, indirect and consequential costs, losses, damages and expenses incurred in any way (including but not limited to that arising from negligence) in connection with any use of or reliance on the information.

© The State of Queensland (Dept of Environment and Resource Management (DERM)) 2016.
Map Grid of Australia (MGA) Zone 56 Geodetic Datum of Australia (GDA) 1994

Scale 1:10000 1cm = 100m (on A3 print)

0 100 200 300 400 m



Trunk Stormwater

Map: PFTI-SWD-28

Version 3 Date: 15-03-2021



Gympie Regional Council Plans for Trunk Infrastructure

TIN CAN BAY

Legend

- Trunk SWD Pits
 - Trunk SWD Pipes
 - Trunk Drainage Path
- Trunk Stormwater Catchment
- Future Trunk SWD
 - State Road Network

Service Catchment

- Cooloola Coast
- Gympie
- Southside East
- Southside West
- Western Towns
- Non Trunk Catchment

Disclaimer

While every care is taken to ensure the accuracy of this map, Gympie Regional Council makes no representations or warranties about its accuracy, reliability, completeness or suitability for any particular purpose and disclaims all responsibility and all liability (including without limitation, liability in negligence) for all expenses, losses, damage (including indirect or consequential damage) and costs which might incur as a result of the data being inaccurate or incomplete in any way and for any reason.

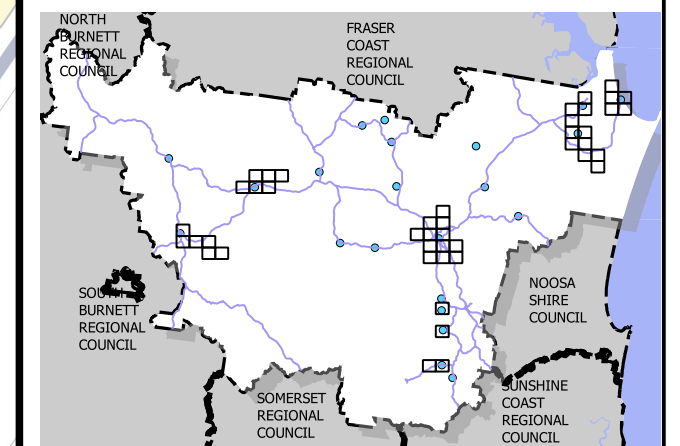
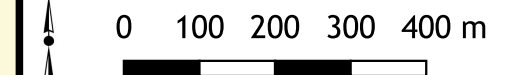
© Copyright Gympie Regional Council 2016

Cadastral Disclaimer:

Despite Department of Environment and Resource Management (DERM)'s best efforts, DERM makes no representations or warranties in relation to the information, and, to the extent permitted by law, exclude or limit all warranties relating to correctness, accuracy, reliability, completeness or currency and all liability for any direct, indirect and consequential costs, losses, damages and expenses incurred in any way (including but not limited to that arising from negligence) in connection with any use of or reliance on the information.

© The State of Queensland (Dept of Environment and Resource Management (DERM)) 2016.
Map Grid of Australia (MGA) Zone 56 Geodetic Datum of Australia (GDA) 1994

Scale 1:10000 1cm = 100m (on A3 print)



Trunk Stormwater

Map: PFTI-SWD-29

Version 3 Date: 15-03-2021





Gympie Regional Council Plans for Trunk Infrastructure

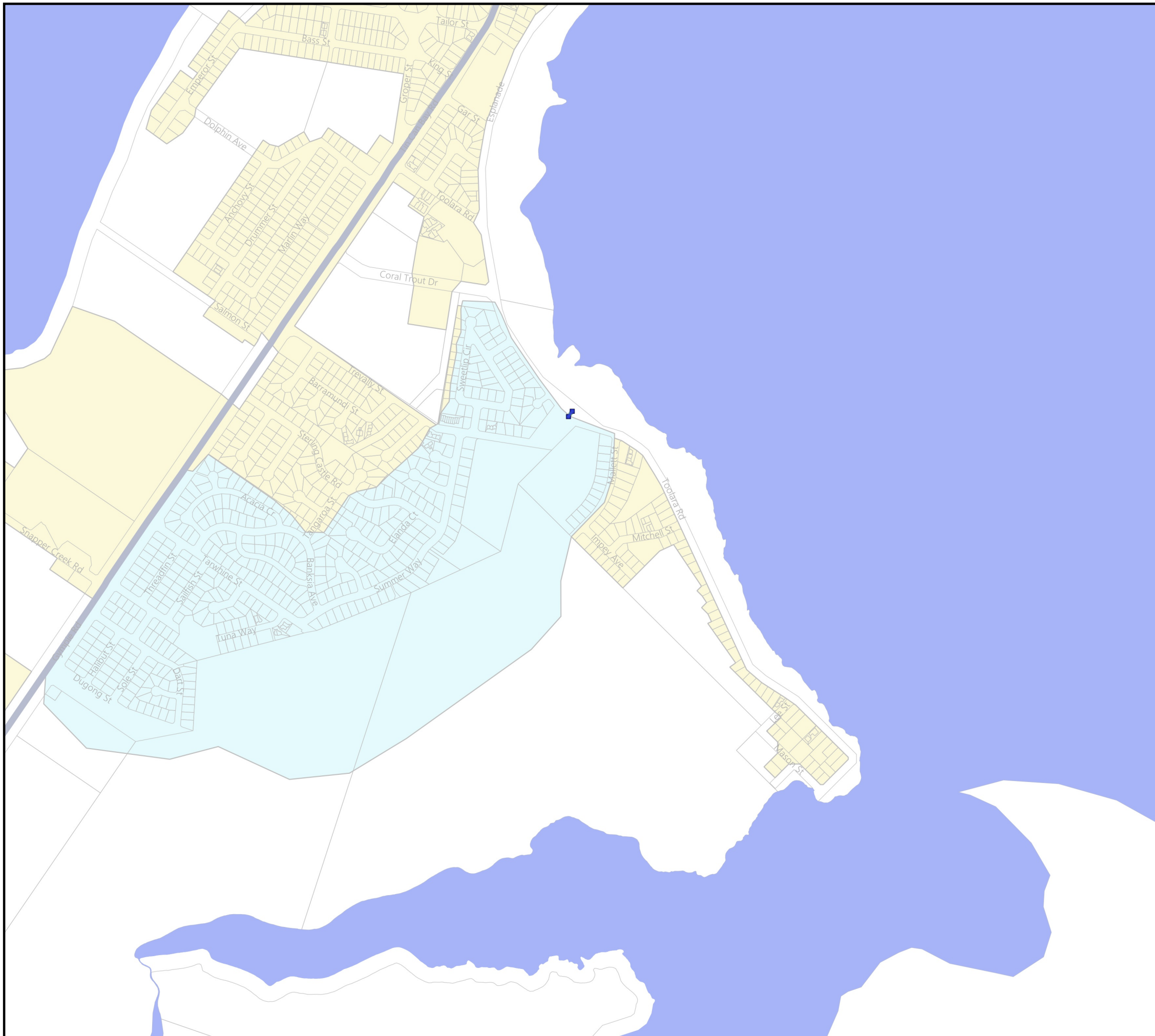
TIN CAN BAY

Legend

- Trunk SWD Pits
- Trunk SWD Pipes
- Trunk Drainage Path
- Future Trunk SWD
- State Road Network

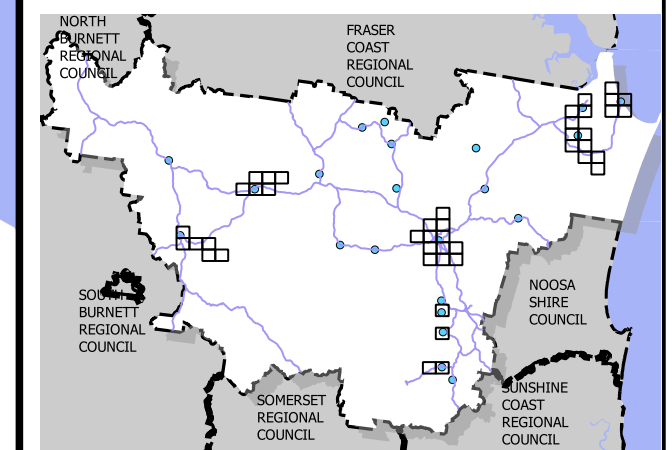
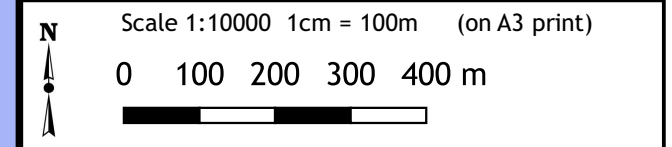
Service Catchment

- Cooloola Coast
- Gympie
- Southside East
- Southside West
- Western Towns
- Non Trunk Catchment



Disclaimer
While every care is taken to ensure the accuracy of this map, Gympie Regional Council makes no representations or warranties about its accuracy, reliability, completeness or suitability for any particular purpose and disclaims all responsibility and all liability (including without limitation, liability in negligence) for all expenses, losses, damage (including indirect or consequential damage) and costs which might incur as a result of the data being inaccurate or incomplete in any way and for any reason.
© Copyright Gympie Regional Council 2016

Cadastral Disclaimer:
Despite Department of Environment and Resource Management (DERM)'s best efforts, DERM makes no representations or warranties in relation to the information, and, to the extent permitted by law, exclude or limit all warranties relating to correctness, accuracy, reliability, completeness or currency and all liability for any direct, indirect and consequential costs, losses, damages and expenses incurred in any way (including but not limited to that arising from negligence) in connection with any use of or reliance on the information.
© The State of Queensland (Dept of Environment and Resource Management (DERM)) 2016.
Map Grid of Australia (MGA) Zone 56 Geodetic Datum of Australia (GDA) 1994



Trunk Stormwater
Map: PFTI-SWD-30
Version 3 Date: 15-03-2021



Gympie Regional Council
Plans for Trunk Infrastructure

TIN CAN BAY

Legend

- Trunk SWD Pits
- Trunk SWD Pipes
- Trunk Drainage Path

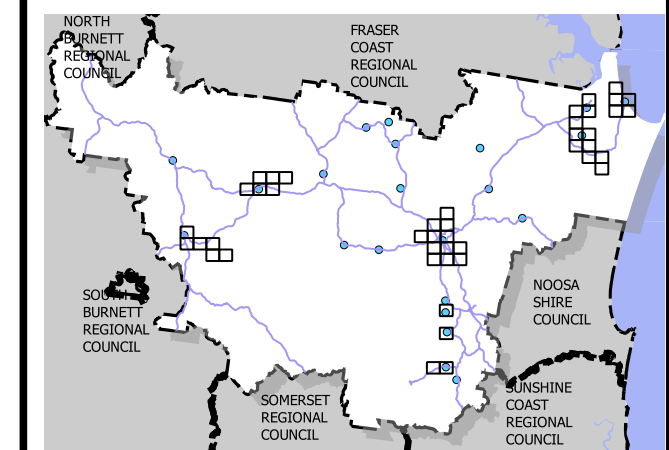
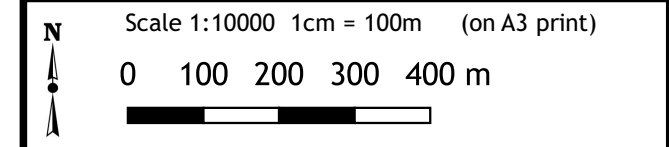
Trunk Stormwater Catchment

- Future Trunk SWD
- State Road Network

Service Catchment

- Cooloola Coast
- Gympie
- Southside East
- Southside West
- Western Towns
- Non Trunk Catchment

Disclaimer
While every care is taken to ensure the accuracy of this map, Gympie Regional Council makes no representations or warranties about its accuracy, reliability, completeness or suitability for any particular purpose and disclaims all responsibility and all liability (including without limitation, liability in negligence) for all expenses, losses, damage (including indirect or consequential damage) and costs which might incur as a result of the data being inaccurate or incomplete in any way and for any reason.
© Copyright Gympie Regional Council 2016
Cadastral Disclaimer:
Despite Department of Environment and Resource Management (DERM)'s best efforts, DERM makes no representations or warranties in relation to the information, and, to the extent permitted by law, exclude or limit all warranties relating to correctness, accuracy, reliability, completeness or currency and all liability for any direct, indirect and consequential costs, losses, damages and expenses incurred in any way (including but not limited to that arising from negligence) in connection with any use of or reliance on the information.
© The State of Queensland (Dept of Environment and Resource Management (DERM)) 2016.
Map Grid of Australia (MGA) Zone 56 Geodetic Datum of Australia (GDA) 1994



Trunk Stormwater
Map: PFTI-SWD-31
Version 3 Date: 15-03-2021



Gympie Regional Council Plans for Trunk Infrastructure

COOLOOLA COVE

Legend

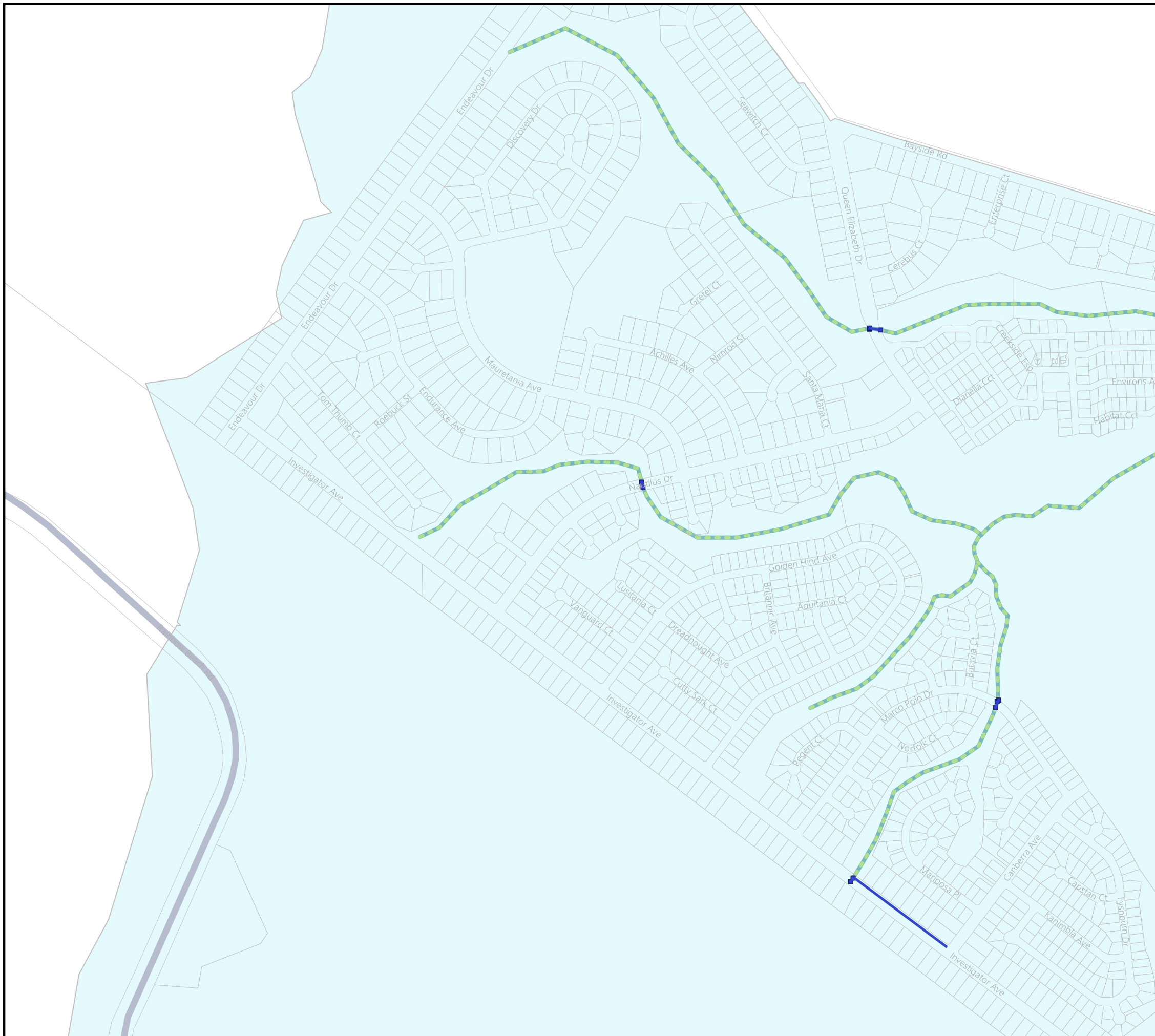
- Trunk SWD Pits
- Trunk SWD Pipes
- Trunk Drainage Path

Trunk Stormwater Catchment

- Future Trunk SWD
- State Road Network

Service Catchment

- Cooloola Coast
- Gympie
- Southside East
- Southside West
- Western Towns
- Non Trunk Catchment



Disclaimer
While every care is taken to ensure the accuracy of this map, Gympie Regional Council makes no representations or warranties about its accuracy, reliability, completeness or suitability for any particular purpose and disclaims all responsibility and all liability (including without limitation, liability in negligence) for all expenses, losses, damage (including indirect or consequential damage) and costs which might incur as a result of the data being inaccurate or incomplete in any way and for any reason.

© Copyright Gympie Regional Council 2016

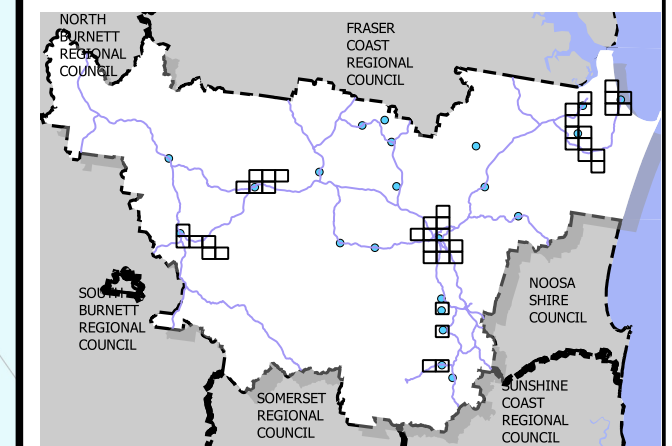
Cadastral Disclaimer:

Despite Department of Environment and Resource Management (DERM)'s best efforts, DERM makes no representations or warranties in relation to the information, and, to the extent permitted by law, exclude or limit all warranties relating to correctness, accuracy, reliability, completeness or currency and all liability for any direct, indirect and consequential costs, losses, damages and expenses incurred in any way (including but not limited to that arising from negligence) in connection with any use of or reliance on the information.

© The State of Queensland (Dept of Environment and Resource Management (DERM)) 2016.

Map Grid of Australia (MGA) Zone 56 Geodetic Datum of Australia (GDA) 1994

Scale 1:10000 1cm = 100m (on A3 print)



Trunk Stormwater

Map: PFTI-SWD-33

Version 3 Date: 15-03-2021



Gympie Regional Council Plans for Trunk Infrastructure

COOLOOLA COVE

Legend

- Trunk SWD Pits
- Trunk SWD Pipes
- Trunk Drainage Path

Trunk Stormwater Catchment

- Future Trunk SWD
- State Road Network

Service Catchment

- Cooloola Coast
- Gympie
- Southside East
- Southside West
- Western Towns
- Non Trunk Catchment

Disclaimer

While every care is taken to ensure the accuracy of this map, Gympie Regional Council makes no representations or warranties about its accuracy, reliability, completeness or suitability for any particular purpose and disclaims all responsibility and all liability (including without limitation, liability in negligence) for all expenses, losses, damage (including indirect or consequential damage) and costs which might incur as a result of the data being inaccurate or incomplete in any way and for any reason.

© Copyright Gympie Regional Council 2016

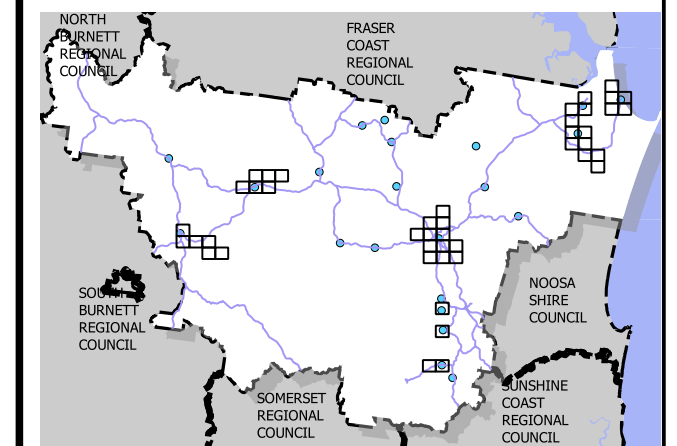
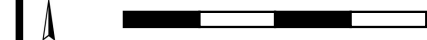
Cadastral Disclaimer:

Despite Department of Environment and Resource Management (DERM)'s best efforts, DERM makes no representations or warranties in relation to the information, and, to the extent permitted by law, exclude or limit all warranties relating to correctness, accuracy, reliability, completeness or currency and all liability for any direct, indirect and consequential costs, losses, damages and expenses incurred in any way (including but not limited to that arising from negligence) in connection with any use of or reliance on the information.

© The State of Queensland (Dept of Environment and Resource Management (DERM)) 2016.
Map Grid of Australia (MGA) Zone 56 Geodetic Datum of Australia (GDA) 1994

Scale 1:10000 1cm = 100m (on A3 print)

0 100 200 300 400 m



Trunk Stormwater

Map: PFTI-SWD-34

Version 3 Date: 15-03-2021



Gympie Regional Council Plans for Trunk Infrastructure

TOOLARA FOREST

Legend

- Trunk SWD Pits
 - Trunk SWD Pipes
 - Trunk Drainage Path
- Trunk Stormwater Catchment
- Future Trunk SWD
 - State Road Network

Service Catchment

- Cooloola Coast
- Gympie
- Southside East
- Southside West
- Western Towns
- Non Trunk Catchment

Disclaimer

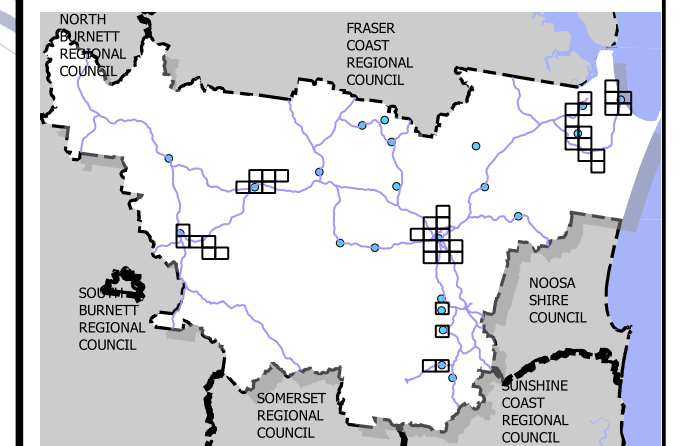
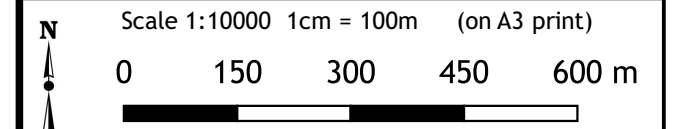
While every care is taken to ensure the accuracy of this map, Gympie Regional Council makes no representations or warranties about its accuracy, reliability, completeness or suitability for any particular purpose and disclaims all responsibility and all liability (including without limitation, liability in negligence) for all expenses, losses, damage (including indirect or consequential damage) and costs which might incur as a result of the data being inaccurate or incomplete in any way and for any reason.

© Copyright Gympie Regional Council 2016

Cadastral Disclaimer:

Despite Department of Environment and Resource Management (DERM)'s best efforts, DERM makes no representations or warranties in relation to the information, and, to the extent permitted by law, exclude or limit all warranties relating to correctness, accuracy, reliability, completeness or currency and all liability for any direct, indirect and consequential costs, losses, damages and expenses incurred in any way (including but not limited to that arising from negligence) in connection with any use of or reliance on the information.

© The State of Queensland (Dept of Environment and Resource Management (DERM)) 2016.
Map Grid of Australia (MGA) Zone 56 Geodetic Datum of Australia (GDA) 1994



Trunk Stormwater

Map: PFTI-SWD-35

Version 3 Date: 15-03-2021