

PROJECT UPDATE No.1 - April 2020

What is Cooloola Coast – The Resilient Coast?

Cooloola Coast – The Resilient Coast is a program being undertaken by Gympie Regional Council to manage and adapt to current and future coastal hazard impacts on our coastline and communities. Coastal hazards include erosion of our sandy coastlines, and short or long-term inundation of low-lying areas.

The current focus of the program is the development of a Coastal Hazard Adaptation Strategy (CHAS).

Development of the strategy enables us to:

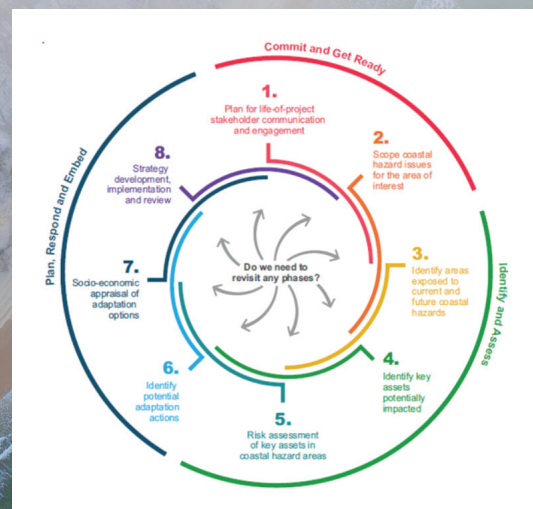
- Share knowledge on coastal hazards and risks to communities, stakeholders and businesses
- Develop enhanced skills and knowledge to enable Council staff and other stakeholders to gain additional knowledge on the coastal hazards within their council area and build important partnerships
- Focus funding on building long-term resilience rather than short-term reconstruction
- Be inclusive of key stakeholders and the community within the Gympie Region, including Traditional Owners, residents, industry, tourism sector, community groups, and utility owners
- Consider a range of environmental and visual amenity values, including the region’s significant sandy beaches, mangroves, estuaries, wetlands and associated ecosystems.

The strategy development is funded by the Queensland Government and the Local Governments Association of Queensland (LGAQ) through the QCoast2100 Program. We are one of over 30 Queensland coastal councils participating in the CHAS process.

What’s already happened?

The *Cooloola Coast – The Resilient Coast* program has been running since mid 2018, and the work to date towards completion of a Coastal Hazard Adaptation Strategy has included (Phases 1 – 4 of the 8 phase process):

- Initial project scoping and engagement
- Technical assessments and coastal hazard mapping (erosion and inundation)
- Collation of asset data and information
- Canvassing community experiences, values and issues of concern
- Technical assessments of coastal hazard exposure for different asset types.



PROJECT UPDATE No.1 (cont.) - April 2020

What's happening now?

The project team is currently completing Phases 5 and 6, including:

- Technical assessments of coastal hazard risk (likelihood and consequence) for built and natural assets
- Scoping of options to mitigate risk, adapt to change and other opportunities for coastal management.

The draft strategy is due for completion by September 2020.



Stakeholder Advisory Group

A Stakeholder Advisory Group will provide input into the draft strategy, and help develop and prioritise coastal hazard adaptation options and strategic actions for the future. The group will be comprised of a range of representatives from key stakeholder groups, including:

- Infrastructure and public asset owners
- Private asset owners
- Public asset user groups
- Cultural and environmental asset protection special interest groups
- Traditional Owners.

How to get involved

If you are interested in Cooloola Coast – The Resilient Coast, please be part of our community consultation. Your ideas and input will be a valuable part of our strategy development.

- Check the website <https://www.gympie.qld.gov.au/resilientcooloola> for regular project updates and fact sheets, upcoming events, and opportunities to participate in surveys and other activities, and comment on the draft strategy (mid-late 2020).
- Ask the team questions about coastal hazards and the strategy by emailing the project team at environment@gympie.qld.gov.au.