



Gympie Regional Council Planning Scheme Key Resource Areas Overlay

Development Constraints

- Transport route
- Key Resource Area
- Key Separation Area

Cadastre

- DCDB ver. February 2018
- Suburb or Locality Boundary
- Local Government Boundary
- Waterbodies & Waterways

This map series has had the base map updated to reflect The Department of Natural Resources, Mines and Energy cadastral data 2018. The overlay data remains the same as published in the Gympie Regional Council Planning Scheme 2013.

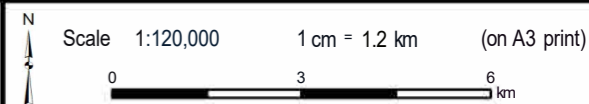
Key Resource Area Maps Disclaimer:
The Dept of Mines and Energy (DME), Queensland, makes no warrant, guarantee or make any representations regarding the correctness, accuracy, reliability, currency, or any other aspect regarding characteristics or use of the information presented in this map. The user accepts sole responsibility and risk associated with the use and results of the information, irrespective of the purpose to which such use or results are applied. In no event shall DME be liable for any special, indirect or consequential damages or any damages whatsoever resulting from loss of use, data or profits, whether in an action of contract, negligence or tort, rising out of or in connection with the use or performance of DME information.
©The State of Queensland (Dept of Mines and Energy) 2012.

Disclaimer
While every care is taken to ensure the accuracy of this map, Gympie Regional Council makes no representations or warranties about its accuracy, reliability, completeness or suitability for any particular purpose and disclaims all responsibility and all liability (including without limitation, liability in negligence) for all expenses, losses, damage (including indirect or consequential damage) and costs which might incur as a result of the data being inaccurate or incomplete in any way and for any reason.
© Copyright Gympie Regional Council 2018.

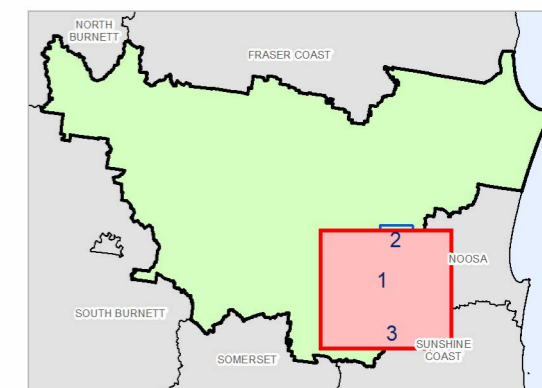
Cadastre Disclaimer:
Despite Department Natural Resources, Mines and Energy (DNRME)'s best efforts, DNRME makes no representations or warranties in relation to the information, and, to the extent permitted by law, exclude or limit all warranties relating to correctness, accuracy, reliability, completeness or currency and all liability for any direct, indirect and consequential costs, losses, damages and expenses incurred in any way (including but not limited to that arising from negligence) in connection with any use of or reliance on the information.
©The State of Queensland (Department Natural Resources, Mines and Energy (DNRME)) 2018.

Map Grid of Australia (MGA) Zone 56 Geodetic Datum of Australia (GOA) 1994

Note: The Gympie Regional Council Planning Scheme was adopted on 12 June 2013 and took effect 1 July 2013

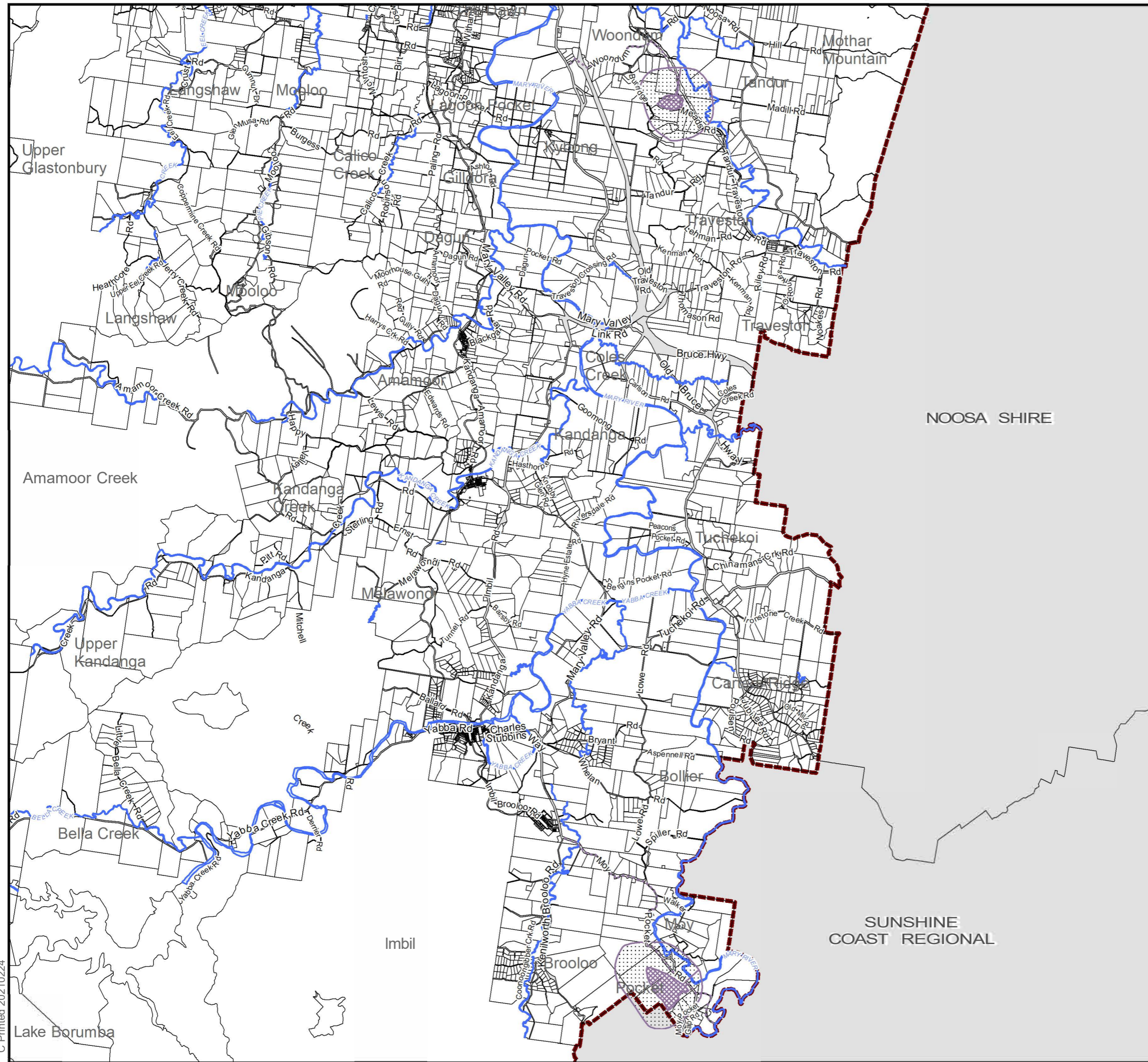


KRA Overlay Map Overview



KRA Overlay Map 1

Version 3 Date: 15-03-2021





Gympie Regional Council Planning Scheme Key Resource Areas Overlay

Development Constraints

- Transport route
- Key Resource Area
- Key Separation Area

Cadastre

- DCDB ver. February 2018
- Suburb or Locality Boundary
- Local Government Boundary
- Waterbodies & Waterways

This map series has had the base map updated to reflect The Department of Natural Resources, Mines and Energy cadastral data 2018. The overlay data remains the same as published in the Gympie Regional Council Planning Scheme 2013.

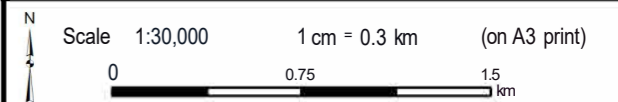
Key Resource Area Maps Disclaimer:
The Dept of Mines and Energy (DME), Queensland, makes no warrant, guarantee or make any representations regarding the correctness, accuracy, reliability, currency, or any other aspect regarding characteristics or use of the information presented in this map. The user accepts sole responsibility and risk associated with the use and results of the information, irrespective of the purpose to which such use or results are applied. In no event shall DME be liable for any special, indirect or consequential damages or any damages whatsoever resulting from loss of use, data or profits, whether in an action of contract, negligence or tort, rising out of or in connection with the use or performance of DME information.
©The State of Queensland (Dept of Mines and Energy) 2012.

Disclaimer
While every care is taken to ensure the accuracy of this map, Gympie Regional Council makes no representations or warranties about its accuracy, reliability, completeness or suitability for any particular purpose and disclaims all responsibility and all liability (including without limitation, liability in negligence) for all expenses, losses, damage (including indirect or consequential damage) and costs which might incur as a result of the data being inaccurate or incomplete in any way and for any reason.
© Copyright Gympie Regional Council 2018.

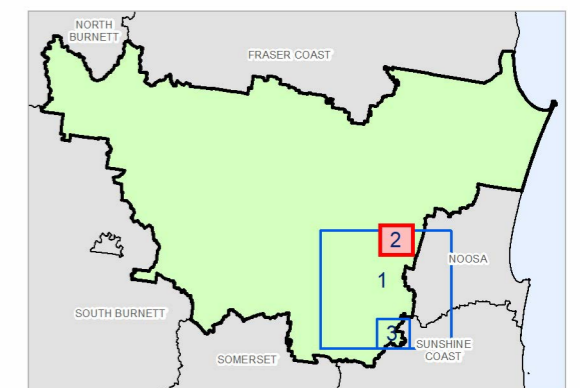
Cadastre Disclaimer:
Despite Department Natural Resources, Mines and Energy (DNRME)'s best efforts, DNRME makes no representations or warranties in relation to the information, and, to the extent permitted by law, exclude or limit all warranties relating to correctness, accuracy, reliability, completeness or currency and all liability for any direct, indirect and consequential costs, losses, damages and expenses incurred in any way (including but not limited to that arising from negligence) in connection with any use of or reliance on the information.
©The State of Queensland (Department Natural Resources, Mines and Energy (DNRME)) 2018.

Map Grid of Australia (MGA) Zone 56 Geodetic Datum of Australia (GOA) 1994

Note: The Gympie Regional Council Planning Scheme was adopted on 12 June 2013 and took effect 1 July 2013



KRA Overlay Map Overview



KRA Overlay Map 2

Version 3 Date: 15-03-2021



Gympie Regional Council Planning Scheme Key Resource Areas Overlay

Development Constraints

- Transport route
- [Cross-hatched pattern] Key Resource Area
- [Dotted pattern] Key Separation Area

Cadastre

- [DCDB icon] DCDB ver. February 2018
- [Suburb boundary icon] Suburb or Locality Boundary
- [Local government boundary icon] Local Government Boundary
- [Waterbodies icon] Waterbodies & Waterways

This map series has had the base map updated to reflect The Department of Natural Resources, Mines and Energy cadastral data 2018. The overlay data remains the same as published in the Gympie Regional Council Planning Scheme 2013.

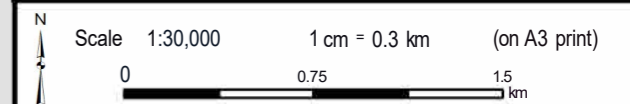
Key Resource Area Maps Disclaimer:
The Dept of Mines and Energy (DME), Queensland, makes no warrant, guarantee or make any representations regarding the correctness, accuracy, reliability, currency, or any other aspect regarding characteristics or use of the information presented in this map. The user accepts sole responsibility and risk associated with the use and results of the information, irrespective of the purpose to which such use or results are applied. In no event shall DME be liable for any special, indirect or consequential damages or any damages whatsoever resulting from loss of use, data or profits, whether in an action of contract, negligence or tort, rising out of or in connection with the use or performance of DME information.
©The State of Queensland (Dept of Mines and Energy) 2012.

Disclaimer
While every care is taken to ensure the accuracy of this map, Gympie Regional Council makes no representations or warranties about its accuracy, reliability, completeness or suitability for any particular purpose and disclaims all responsibility and all liability (including without limitation, liability in negligence) for all expenses, losses, damage (including indirect or consequential damage) and costs which might incur as a result of the data being inaccurate or incomplete in any way and for any reason.
© Copyright Gympie Regional Council 2018.

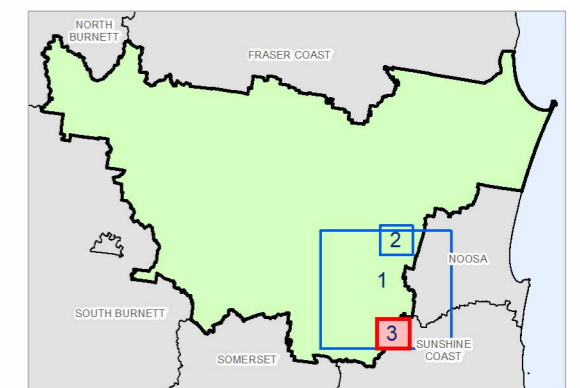
Cadastre Disclaimer:
Despite Department Natural Resources, Mines and Energy (DNRME)'s best efforts, DNRME makes no representations or warranties in relation to the information, and, to the extent permitted by law, exclude or limit all warranties relating to correctness, accuracy, reliability, completeness or currency and all liability for any direct, indirect and consequential costs, losses, damages and expenses incurred in any way (including but not limited to that arising from negligence) in connection with any use of or reliance on the information.
©The State of Queensland (Department Natural Resources, Mines and Energy (DNRME)) 2018.

Map Grid of Australia (MGA) Zone 56 Geodetic Datum of Australia (GOA) 1994

Note: The Gympie Regional Council Planning Scheme was adopted on 12 June 2013 and took effect 1 July 2013



KRA Overlay Map Overview



KRA Overlay Map 3

Version 3 Date: 15-03-2021

