



Gympie Regional Council Plans for Trunk Infrastructure

Road Service Catchment

- Gympie
- Rural Residential
- Cooloola Coast
- Balance

Pathways Service Catchment

- Cooloola Coast
- Gympie
- Balance
- Map Number

Disclaimer

While every care is taken to ensure the accuracy of this map, Gympie Regional Council makes no representations or warranties about its accuracy, reliability, completeness or suitability for any particular purpose and disclaims all responsibility and all liability (including without limitation, liability in negligence) for all expenses, losses, damage (including indirect or consequential damage) and costs which might incur as a result of the data being inaccurate or incomplete in any way and for any reason.

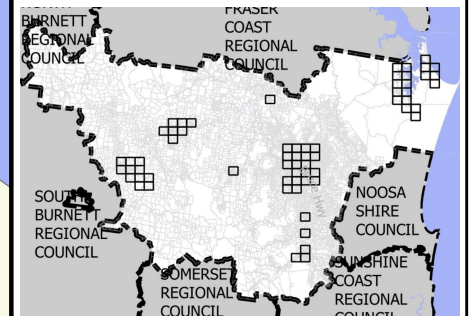
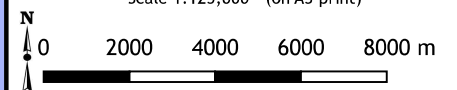
© Copyright Gympie Regional Council 2016

Cadastral Disclaimer:

Despite Department of Environment and Resource Management (DERM)'s best efforts, DERM makes no representations or warranties in relation to the Information, and, to the extent permitted by law, exclude or limit all warranties relating to correctness, accuracy, reliability, completeness or currency and all liability for any direct, indirect and consequential costs, losses, damages and expenses incurred in any way (including but not limited to that arising from negligence) in connection with any use of or reliance on the Information.

© The State of Queensland (Dept of Environment and Resource Management (DERM)) 2016.
Map Grid of Australia (MGA) Zone 56 Geodetic Datum of Australia (GDA) 1994

Scale 1:125,000 (on A3 print)



Map: PFTI-TRD Transport Service Catchments

Version 3 Date: 15-03-2021

