

Gympie Regional Gallery Exhibition Program

**February to
June 2024**



Gympie
Regional Gallery

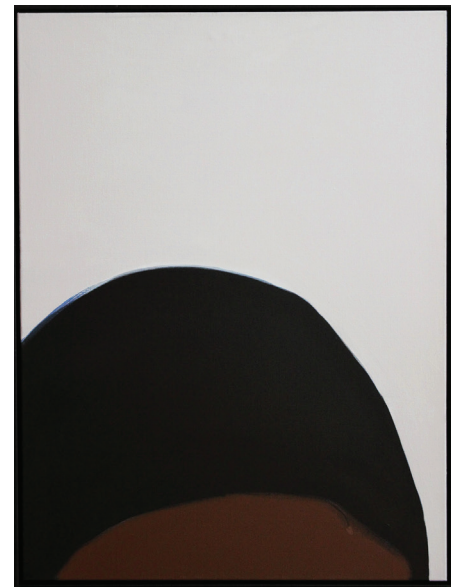


Simply Abstract

Kurt Olsen

7 February - 22 March

Conversations with Kurt Saturday 10 February, 2pm



Exploring minimalist abstraction, local artist Kurt Olsen aims to reveal a degree of unshaken equilibrium amid chaos; that feeling when the painting is complete; in balance and in harmony.

Kurt was the recipient of the Locals Award, 2023 Du Rietz Art Awards.

Kurt Olsen, *Mt Cooran*, 2023.

Birdlands

Zela Bissett

22 February - 23 March

Official Opening

Saturday 24 February, 11am

Celebrate our region's diverse birdlife from the Wallum heathlands to the avian intensity of Lake Alford. Local artist Zela Bissett will take you on a joyful papermaking and felt journey with our feathered friends.

Zela Bissett, *Escaping the Embers*, 2023.



Paper: All Stitched Up

Papermakers and Artists Queensland Inc.

22 February - 23 March

Official Opening

Saturday 24 February, 11am

A contemporary view of papermaking and paper art by 22 members of Papermakers and Artists Qld, showcasing an array of paper art and techniques, where stitching is an integral part of the design.

The artworks – including hangings, sculptures, objects, and artist books – demonstrate how stitching can add layers of meaning and metaphor to the creative process.

Glenda Hennig, *Sticks and Stones 1*.



Fleeting Memories

Emma Thorp

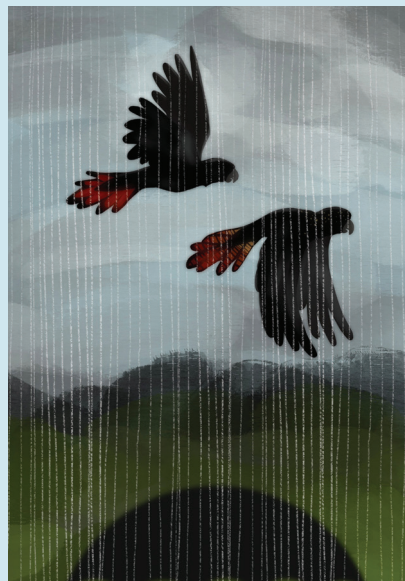
26 March - 11 May

Official Opening

Friday 5 April, 6pm

A collection of 365 images created by regional artist Emma Thorp on each day of 2022 that capture and celebrate everyday moments that would otherwise be forgotten.

Emma Thorp, *A Good Omen*, 2022.



Lionel's Place

2 April - 25 May

Official Opening Friday 5 April, 6pm

Lionel's Place is an exhibition featuring the significant 2016 donation to the Maitland Regional Art Gallery Collection by Max and Nola Tegel of Lionel Lindsay etchings, wood engravings, woodblocks, watercolours and books.



Lionel Lindsay was born in Creswick, Victoria in 1874 and died in Wahroongah, NSW in 1961. He was an artist who honed his skills in etching and wood engraving so finely that by 1927 he was hailed as the most internationally successful Australian printmaker of all time.

A Maitland Regional Art Gallery touring exhibition.



Red Cactus, 1939, wood engraving, printed in black ink on paper, 14.3 x 15cm, donated to the Maitland Regional Art Gallery Collection under the Australian Government's Cultural Gifts Program by Max and Nola Tegel in 2016. © the Estate of Lionel Lindsay. By permission of the National Library of Australia.

State of the Art

Queensland Quilters Inc.

15 May - 29 June

Official Opening and Presentation of Prizes

Saturday 25 May, 1.30pm

Art quilts celebrating the 40th year of Queensland Quilters and 15 years of the SOTA competition. Techniques vary from printing, eco-dyeing, collage, hand and machine-stitching guided by the theme 'Red Expressions'.

Painting the Sky Red (detail), 2023.



JADA

5 June - 13 July

Official Opening Friday 7 June, 6pm

Grafton Regional Gallery's flagship art prize, the *Jacaranda Acquisitive Drawing Award* celebrates drawing in all its splendour from hyper-realism to the expressive and abstract, evoking the poetic and emotional response to the human condition and our environment.

This award seeks to encourage and promote innovation and excellence in drawing, and plays a vital role in fostering Australian drawing practice.

A Grafton Regional Gallery touring exhibition. The biennial JADA is the Grafton Regional Gallery's flagship art prize generously sponsored by Friends of Grafton Gallery (FoGG).



Regular Gallery Activities

Art Stars

Children's art group, the first Saturday of each month, 10.30am-12pm.

Art After School

Children's weekly art group, Tuesdays 3.30pm-4.30pm during school terms.

Teens Art Space

Teen's weekly art group, Wednesdays 3.30pm-5pm during school terms.

Adult Art Groups

A variety of art groups meet weekly during school terms.

Bookings essential for all events and workshops. Visit gympie.qld.gov.au/gallery

Gallery Shop

If you are looking for a quality gift, look no further. Our Gallery shop has a unique and exciting collection of hand-crafted gifts, by local and regional artists. Open during normal Gallery hours.

If you would like to sell your creations, contact the Gallery for further information.

39 Nash Street, Gympie

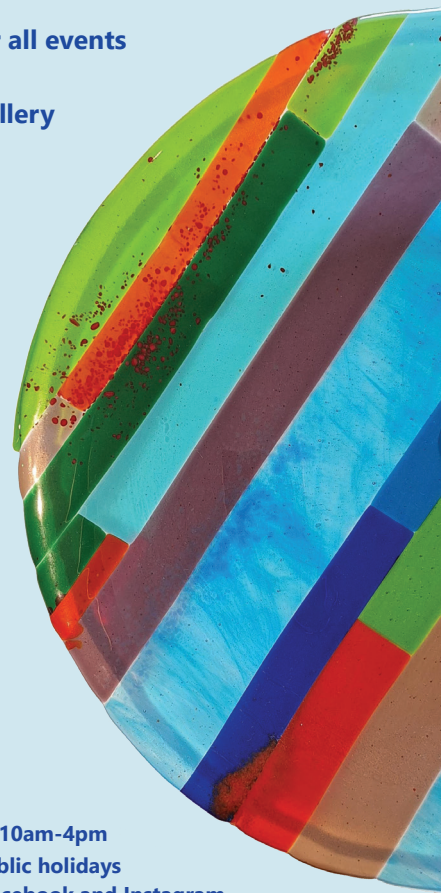
Phone 1300 307 800

gympie.qld.gov.au/gallery

Open Tuesday to Saturday, 10am-4pm

Parking at rear | Closed public holidays

Entry is free | Find us on Facebook and Instagram



Cover image credit: Ian Gunn, *Stolen spaces* (diptych) (detail), 2022, ink and acrylic on aluminium and board, 70 x 145 cm, (unframed).

Courtesy of the Artist for *Jacaranda Acquisitive Drawing Award*.